



11/1-3 Gubbuteh Road LITTLE BAY NSW

2 2 1

"JUST LISTED...TOTAL AREA: 123m2 "

This amazing ultramodern apartment is perfectly positioned within the 'multi' award winning Prince Henry residential community along Sydney's Eastern Suburbs coastline.

Most importantly, it is just a short stroll to magical Little Bay Beach and only 20 minutes to the City centre, with regular transport on your doorstep!

Enjoy the luxury of living within an award winning master planned community, with its' own retail village and supermarket, McCartney Oval and park lands, children's playground, community centre, coastal walks, pristine waters of Little Bay Beach, surrounded by golf courses and green open headlands, this 2 bedroom + study has so much to offer!

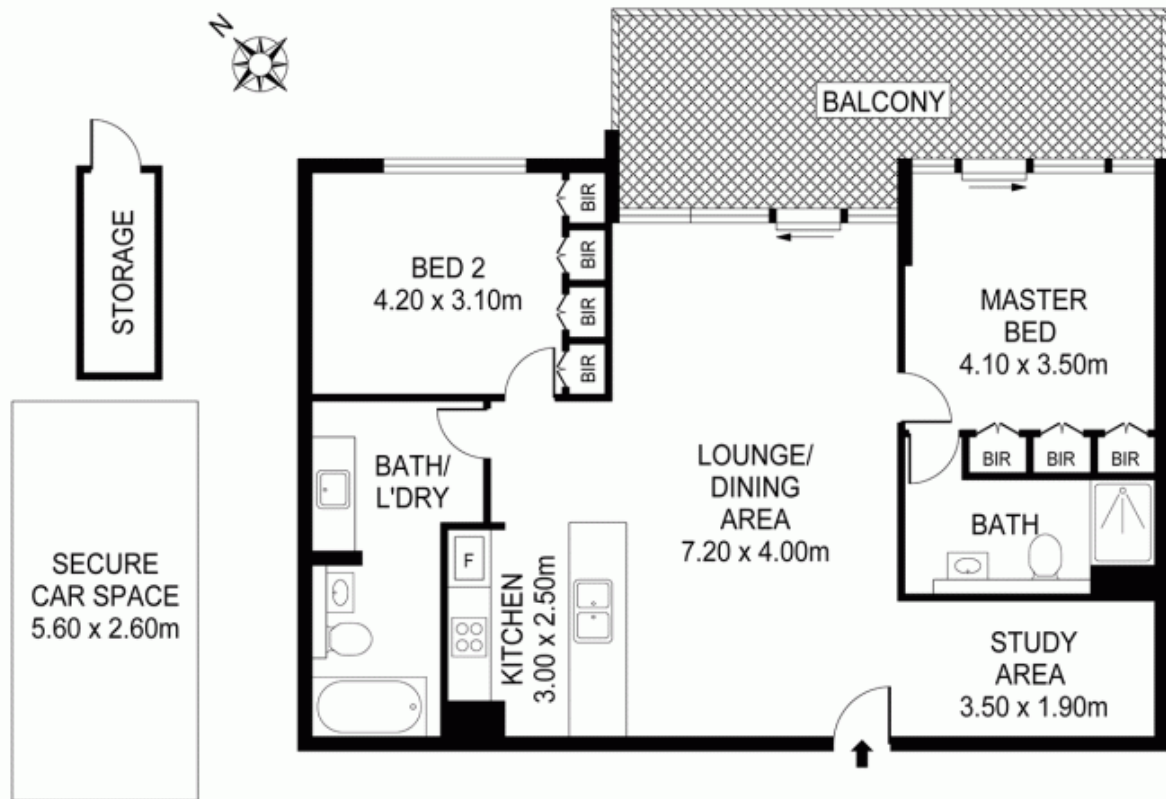
**Building Size** : 13 sqm

**View**

: <https://www.mypropertyepping.com.au/sale/nsw/eastern-suburbs/little-bay/residential/apartment/5674949>



**Peter Horozakis**  
(02) 9868 4888



**11/1-3 GUBBUTEH RD, LITTLE BAY**

**TOTAL APPROX. FLOOR AREA 90 SQ M**

Measurements are approximate. Not to Scale. For illustrative purposes only.