

167 North West Arm Road GRAYS POINT NSW

6 5 6

Offered for the first time, flawlessly appointed and designed over three huge levels is a rare offering not to be missed. Built in the early 1990s together with its double brick construction and 3.2m high ceilings throughout, this is the perfect set-up to accommodate up to three families or an opportunity for the astute investor to collect three separate rents.

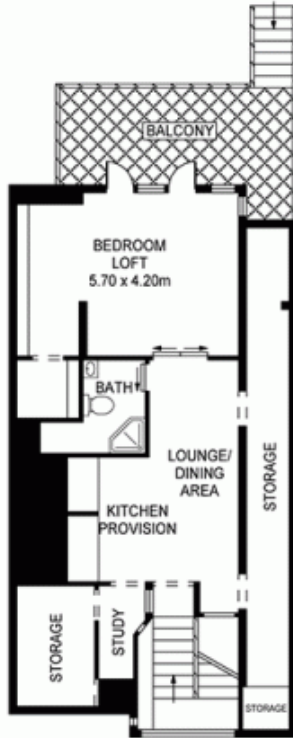
Nestled in the peaceful community of Grays Point on a generous 961.1m² of prime real estate, the homes presents a cleverly designed floor plan providing versatile options for the growing or extended family.

Renowned and admired for its commanding presence, the homes main level offers three double sized bedrooms including a master with ensuite, built-in wardrobe, grand foyer with quality Italian floor tiles, expansive living room

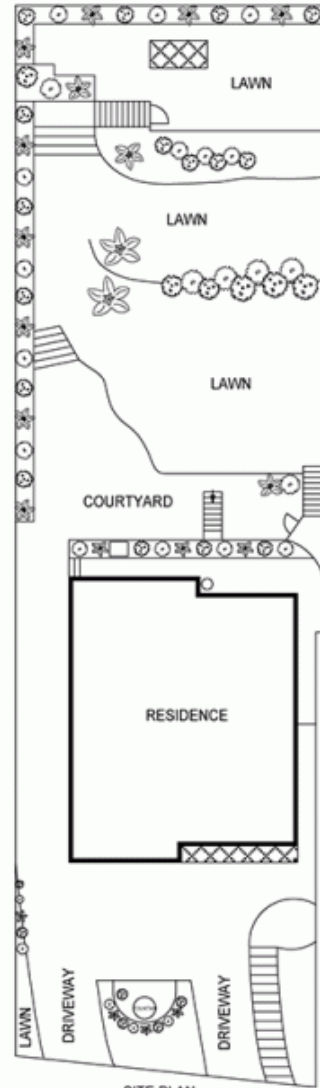
Land Size : 961.1 sqm
View : <https://www.mypropertyepping.com.au/sale/nsw/sutherland/grays-point/residential/house/5674951>



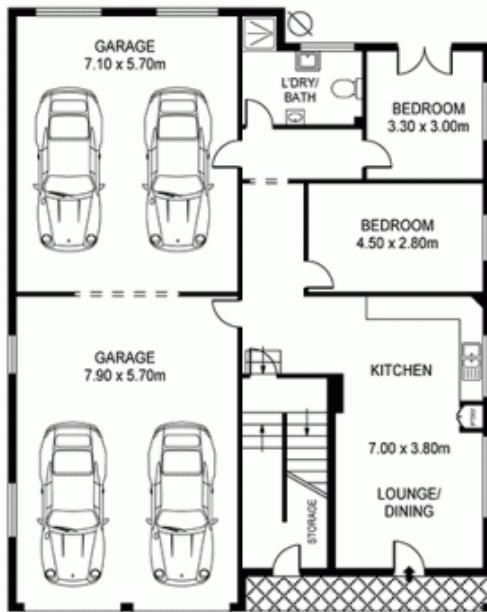
Peter Horozakis
(02) 9868 4888



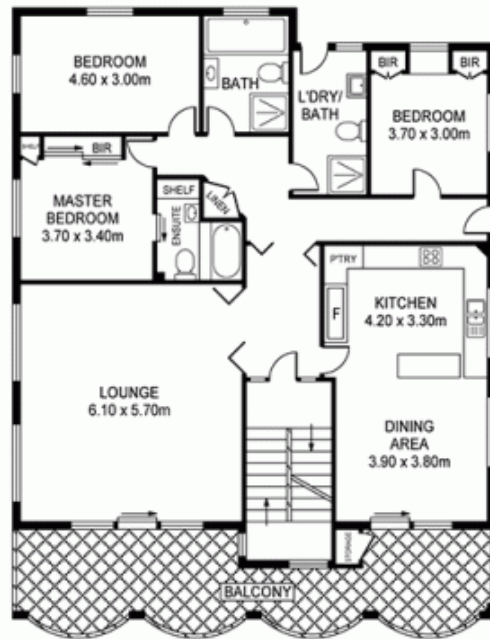
SECOND FLOOR



SITE PLAN
(NOT TO SCALE)



GROUND FLOOR



FIRST FLOOR

167 NORTH WEST ARM RD, GRAYS POINT

Measurements are approximate. Not to Scale. For illustrative purposes only.

