



4/35 Lansdowne Street MERRYLANDS NSW

2 🛏 2 🚿 1 🚗

Superbly positioned within a quiet residential street, this magnificent and contemporary home is one of the finest townhouses currently being offered.

Impressive finishes throughout, this two storey floor plan provides an abundance of spacious living, light filled interiors and most of all peaceful surrounds.

With location being one of its biggest assets, its only a short walk to Merrylands and Guildford's local shops and train stations as well as close proximity to public schools, popular supermarket, parks and much more.

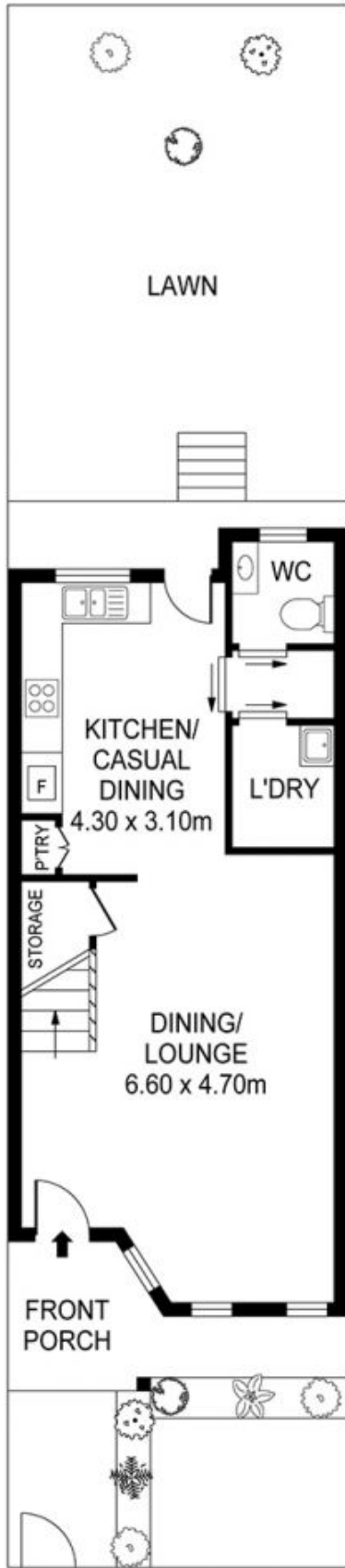
Features include

Strata Plan registered on 8th of October 2012

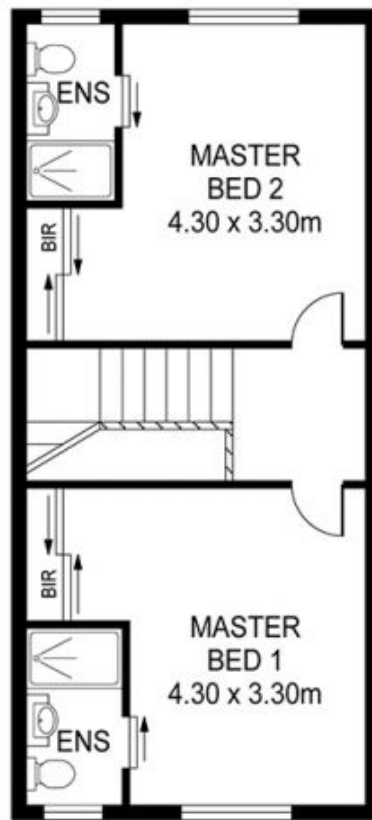
View : <https://www.mypropertyepping.com.au/sale/nsw/parramatta/merrylands/residential/townhouse/5674952>



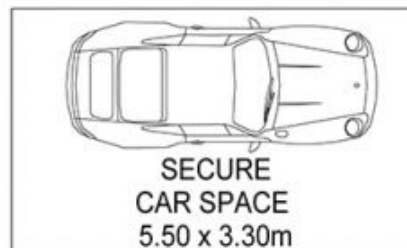
Peter Horozakis
(02) 9868 4888



GROUND FLOOR



FIRST FLOOR



4/35 LANSDOWNE ST, MERRYLANDS

Measurements are approximate. Not to Scale. For illustrative purposes only.

