

1/1-3 Gubbuteh Road LITTLE BAY NSW

2 2 1

### IDEAL ENTRY INTO BEACHSIDE SUBURB

This amazing ultramodern apartment is perfectly positioned within the 'multi' award winning Prince Henry residential community along Sydney's Eastern Suburbs coastline.

Most importantly, it is just a short stroll to magical Little Bay Beach and only 20 minutes to the City centre, with regular transport on your doorstep!

Enjoy the luxury of living within an award winning master planned community, with its' own retail village and supermarket, McCartney Oval and park lands, children's playground, community centre, coastal walks, pristine waters of Little Bay Beach, surrounded by golf courses and green open headlands, this 2 bedroom elevated ground floor apartment has so much to offer and can be purchased

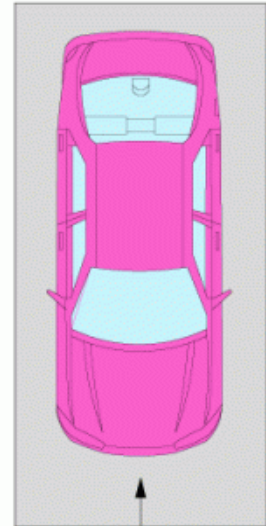
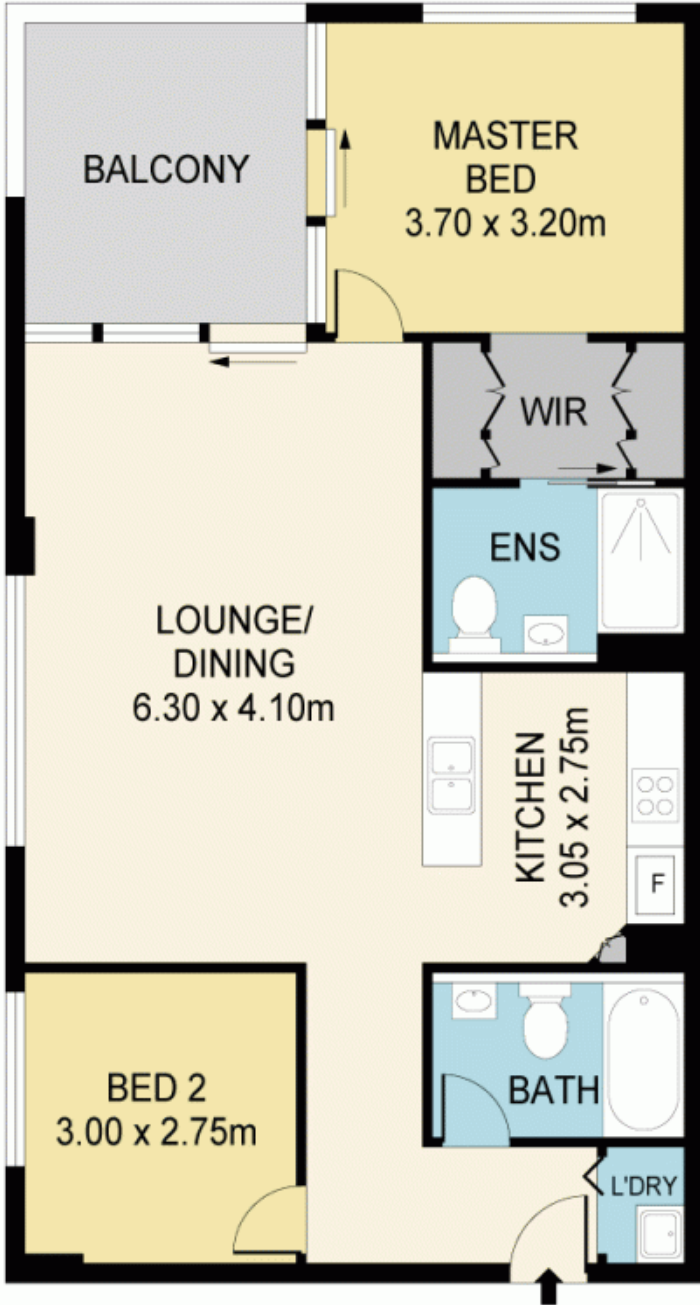
**Land Size** : 102 sqm

**View** : <https://www.mypropertyepping.com.au/sale/nsw/eastern-suburbs/little-bay/residential/apartment/5674967>



**Peter Horozakis**  
(02) 9868 4888

**STORAGE**  
2.30 x 1.00m



SINGLE  
SECURE  
CAR SPACE  
5.40 x 2.60m



## 1/1-3 GUBBUTEH RD, LITTLE BAY

MYPROPERTY EPPING

Disclaimer; Please note that while the information contained in this floor plan is provided by reliable sources, we cannot guarantee its accuracy. It is intended as a guide only. Interested parties should rely on their own enquiry. Drawing not to scale. Dimensions are approximate.