

6/358 Marsden Road CARLINGFORD NSW

2  1  2 

" JUST LISTED...TOTAL AREA: 134.5m2 "

SOMETHING SPECIAL

Creating a lasting impression, this ultra-convenient, full brick and extra spacious apartment represents excellent value and is the perfect entry into the booming Carlingford market.

Tightly held in a small boutique complex of only 8, this desirable unit is positioned on the top floor, boasting light filled interiors, renovated finishes and sweeping urban views overlooking Eric Mobbs park and nature reserve.

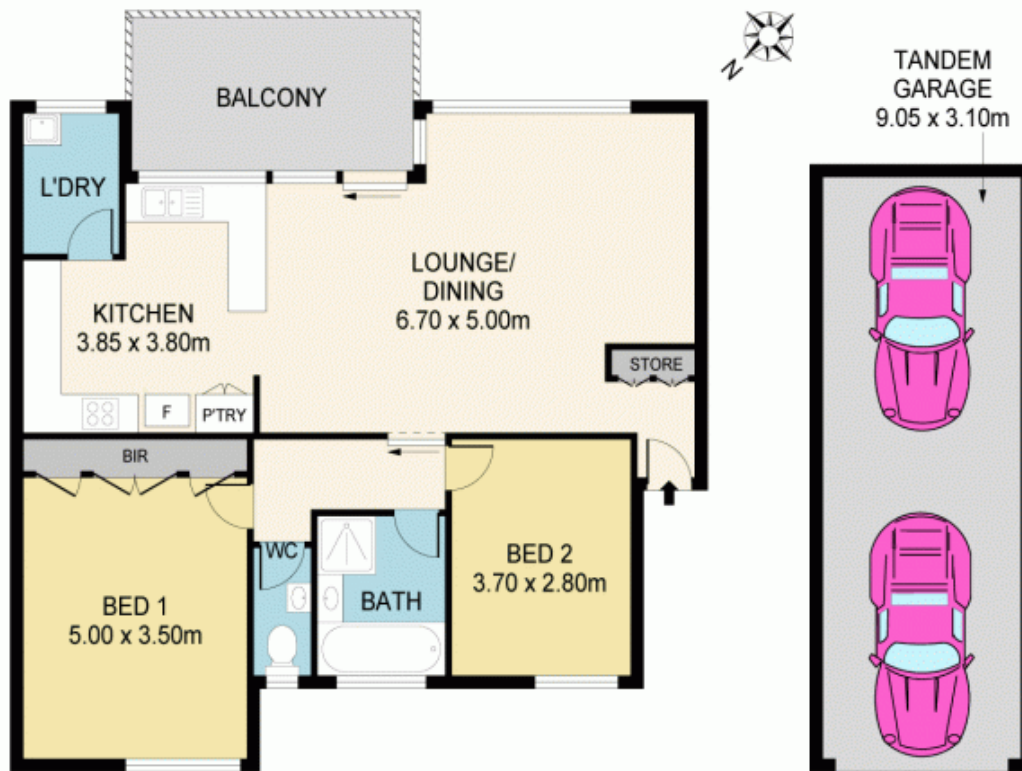
Enviably located in one of Carlingfords most idyllic spots, this walkers paradise position is only a short stroll to Carlingford Court and Village, buses, trains and popular

Land Size : 134.5 sqm

View : <https://www.mypropertyepping.com.au/sale/nsw/northern-suburbs/carlingford/residential/unit/5674974>



Peter Horozakis
(02) 9868 4888



6/358 MARSDEN RD, CARLINGFORD

Disclaimer: Please note that while the information contained in this floor plan is provided by reliable sources, we cannot guarantee its accuracy. It is intended as a guide only. Interested parties should rely on their own enquiry. Drawing not to scale. Dimensions are approximate.

MYPROPERTY ETRVGS