



15 Gloucester Road EPPING NSW

5 🏠 2 🚗 2 🚗

Picture perfect family home!

Brilliantly maintained by one family for the past 45 years and occupying the high side in a sublime blue ribbon locale, this picturesque and peaceful family home is stunningly filled with natural light, spacious interiors and brimming with opportunity to renovate to your liking.

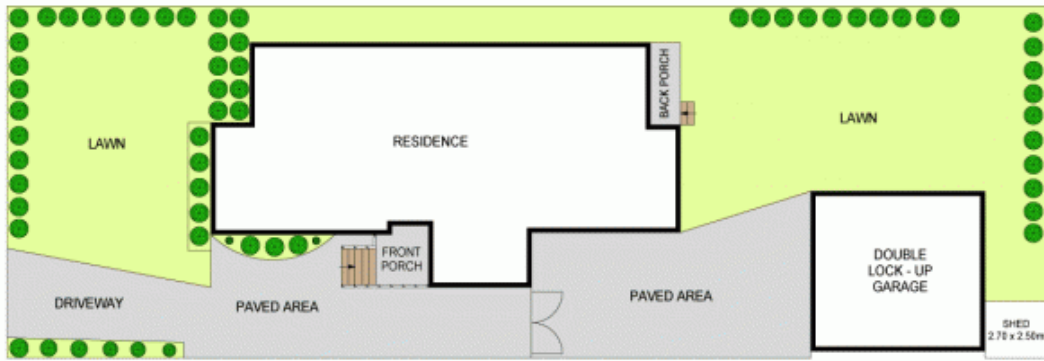
It's coveted East Epping location ensures it is an easy 1.2km stroll to the station, shops and nearby parkland as well as the opportunity for local teenagers to attend the popular Epping Boys and Cheltenham Girls High Schools. The convenience of City buses are also 500 metres away. Everything you need just around the corner!

A rare find on a perfect 695sqm of level real estate, be inspired by its peaceful surrounds, ideal family

Land Size : 695 sqm
View : <https://www.mypropertyepping.com.au/sale/nsw/northern-suburbs/epping/residential/house/5674977>



Peter Horozakis
(02) 9868 4888



SITE PLAN
(NOT TO SCALE)



GROUND LEVEL

15 GLOUCESTER RD, EPPING

Disclaimer - Please note that while the information contained in this floor plan is provided by reliable sources, we cannot guarantee its accuracy. It is intended as a guide only. Interested parties should rely on their own enquiry. Drawing not to scale. Dimensions are approximate.

