

4 Collaroy Road Woodbine NSW

3 1 1

Picture Perfect Investment Opportunity

Arguably one of the most popular suburbs in the Macarthur, this family residence is only a few minutes from the M5 motorway, close to shops, schools, transport and all amenities. Leumeah train station is also only a few minutes away. Everything you need just around the corner!

Positioned on 557sqm of real estate, be inspired by it's peaceful surrounds, ideal family neighbourhood and sunny northerly backyard. Move straight in or keep the current long term tenancy in place.

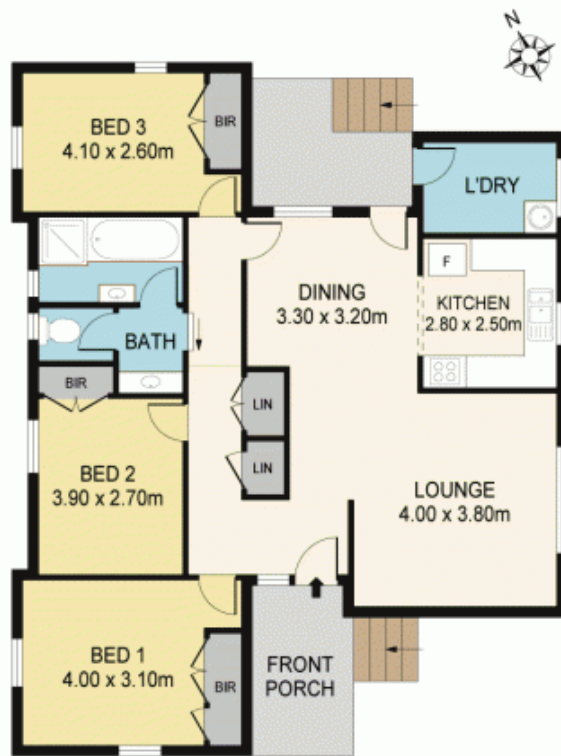
High Points

Ideal family locale

Price : \$ 491,000
Land Size : 557 sqm
View : <https://www.mypropertyepping.com.au/sale/nsw/macarthurcamden/woodbine/residential/house/5674984>



Peter Horozakis
(02) 9868 4888



GROUND FLOOR



SITE PLAN
(NOT TO SCALE)

4 COLLAROY RD, WOODBINE

Disclaimer: Please note that while the information contained in this floor plan is provided by reliable sources, we cannot guarantee its accuracy. It is intended as a guide only. Interested parties should rely on their own enquiry. Drawing not to scale. Dimensions are approximate.