



**10 Lambert Road Bardwell Park NSW**

4 🏠 2 🚗 1 🚗

Charmer in areas best locale...Potential Duplex Site.

Boasting privacy with lush bush land views, brilliantly maintained by one family for the past 58 years, this spectacular original gem is something very special and is brimming with opportunity to further improve to your liking.

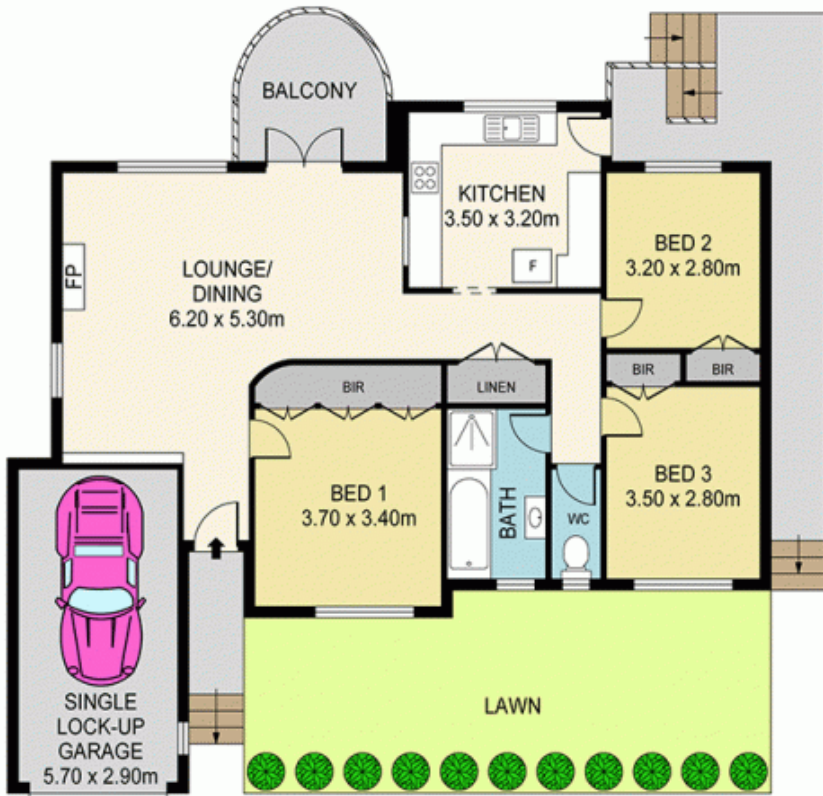
Its prestigious Blue Ribbon locale ensures a peaceful 5 minute stroll to Bardwell Park station (Airport line), shops, Bardwell Park Infants School, parkland, Bardwell Valley Golf Club, RSL and much more. Everything you need just around the corner!

A rare full brick home built on solid rock, this large 796.7sqm of prime real estate is inspired by it's peaceful surrounds, ideal family neighbourhood and enjoyable sunny aspect.

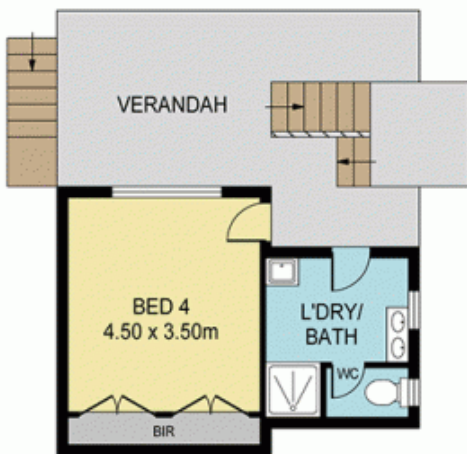
**Land Size** : 796 sqm  
**View** : <https://www.mypropertyepping.com.au/sale/nsw/st-george/bardwell-park/residential/house/5675016>



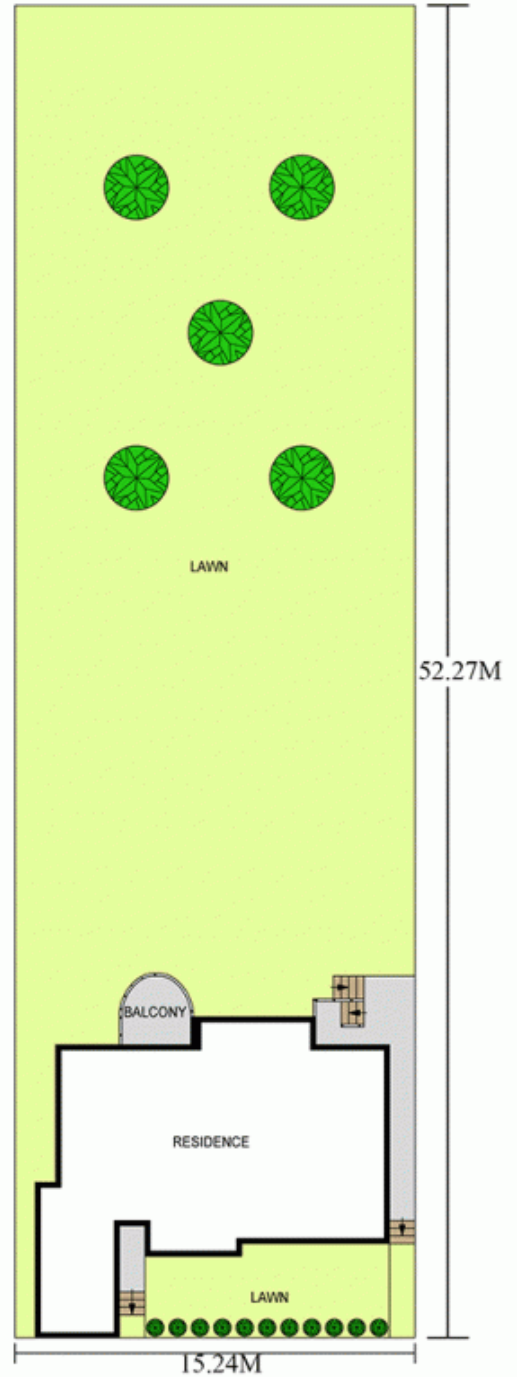
**Peter Horozakis**  
**(02) 9868 4888**



GROUND LEVEL



LOWER LEVEL



15.24M  
TOTAL LAND SIZE  
APPROX 796.7 SQM  
SITE PLAN  
(NOT TO SCALE)

## 10 LAMBERT RD, BARDWELL PARK

Disclaimer: Please note that while the information contained in this floor plan is provided by reliable sources, we cannot guarantee its accuracy. It is intended as a guide only. Interested parties should rely on their own enquiry. Drawing not to scale. Dimensions are approximate.