

13 Higgins Street Condell Park NSW

3 1 2

North facing family haven & Potential Duplex Site.

The complete family package, focusing on contemporary living with sophisticated modern enhancements, peaceful surrounds and an ideal family neighbourhood all reinforce its excellent lifestyle appeal.

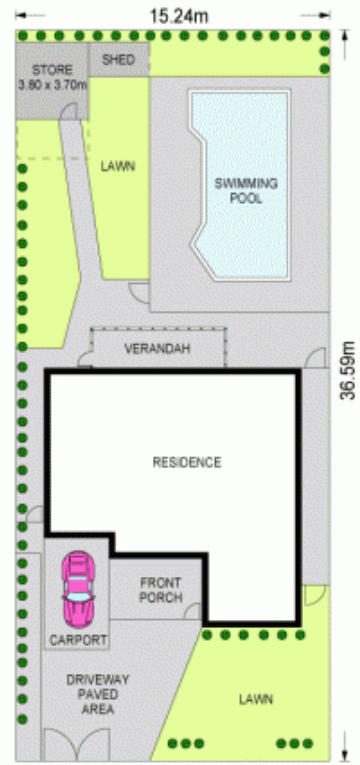
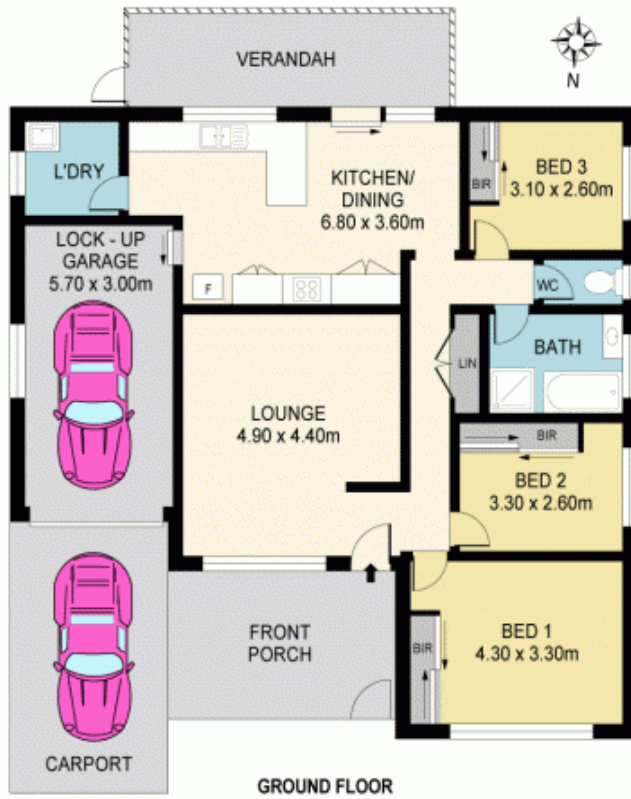
Original elements and recent improvements have been cleverly combined to provide a comfortable and relaxed living environment in a highly sought after suburban setting.

Also calling for developer's & investor's, here's a great chance to purchase an ideal duplex site (subject to council approval). Offering a wide 15.265m frontage and approx. 558 sqm of prime real estate, this property is close to all major amenities including local transport, parkland, schools and shops.

Price : \$ 855,000
Land Size : 558 sqm
View : <https://www.mypropertyepping.com.au/sale/nsw/canterburybankstown/condell-park/residential/house/5675032>



Peter Horozakis
(02) 9868 4888



13 HIGGINS ST, CONDELL PARK

Disclaimer: Please note that while the information contained in this floor plan is provided by reliable sources, we cannot guarantee its accuracy. It is intended as a guide only. Interested parties should rely on their own enquiry. Drawing not to scale. Dimensions are approximate.

