



17 Ryde Street Epping NSW

7 2 1

Ultimate opportunity to develop or renovate...approx. 919.8m2.

Enjoying a prized setting in one of Epping's most tightly held pockets, this existing 7 bedroom family home is set on 919.8sqm approx. of prime real estate.

It presents as a brilliant opportunity to further capitalise by completely renovating from top to bottom or you may build a very large Torrens Title Duplex home (Dual occupancy - Subject to Parramatta Council Approval).

Positioned on the "high side" on near level land, it's only a short stroll to Epping West Public and is in the Cheltenham Girls and Epping Boys High School catchment. Shops, parks and public transport are also only seconds away.

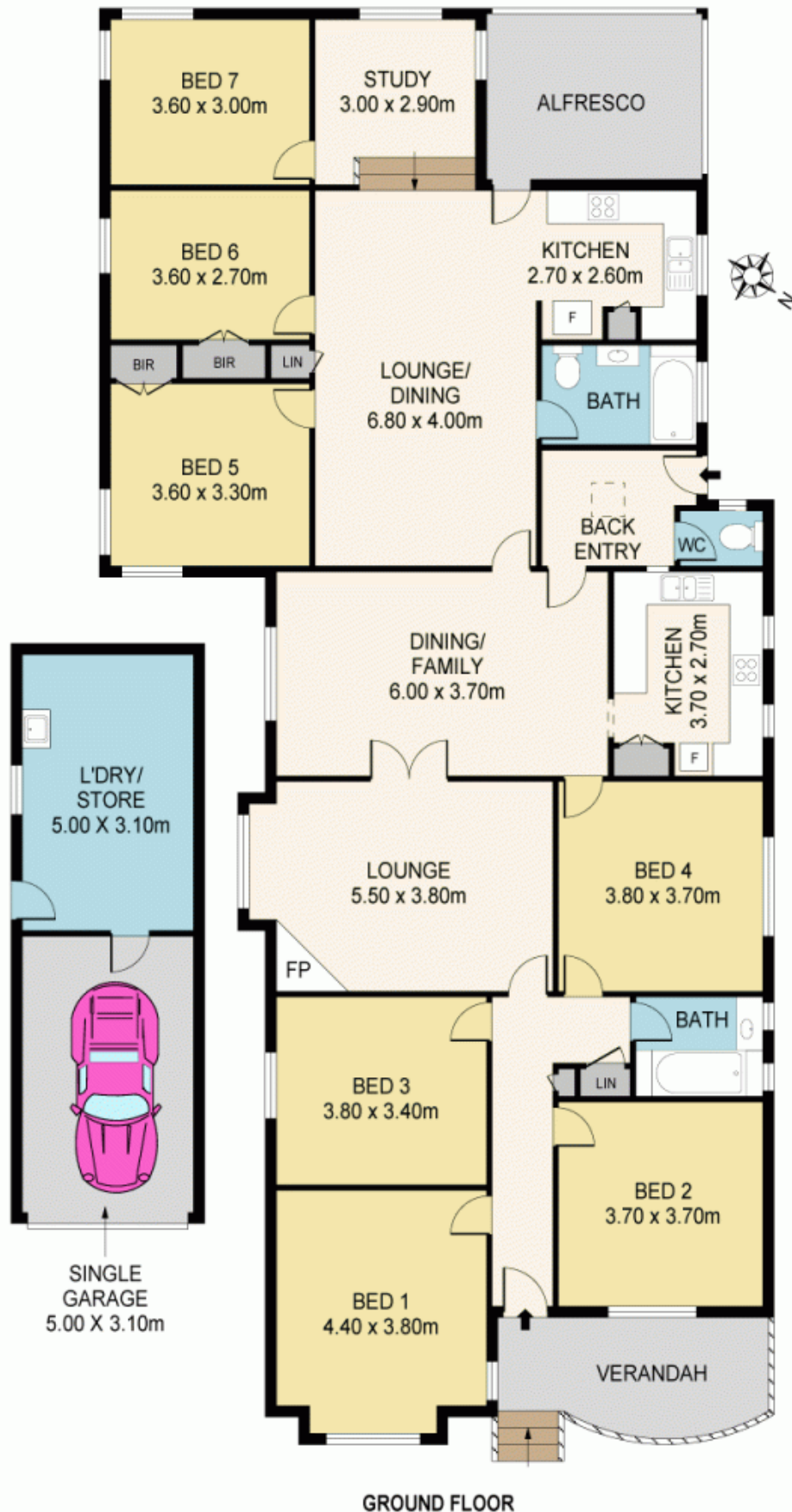
Land Size : 919 sqm
View : <https://www.mypropertyepping.com.au/sale/nsw/northern-suburbs/epping/residential/home/5675051>



Joanne Horozakis
(02) 9868 4888



Peter Horozakis
(02) 9868 4888



17 RYDE ST, EPPING

Disclaimer: Please note that while the information contained in this floor plan is provided by reliable sources, we cannot guarantee its accuracy. It is intended as a guide only. Interested parties should rely on their own enquiry. Drawing not to scale. Dimensions are approximate.

MYPROPERTY EPPING