



## 23 Wildara Avenue West Pennant Hills NSW

4 2 3

Renovated delight in Murray Farm Catchment...935sqm.

Showcasing a commanding position in a tightly held & sought-after enclave together with flawless function in equal measure, this immaculate and desirable single-level address presents a light-filled family entertainer like no other.

Providing immediate comfort with absolutely nothing more to spend, this renovated delight also delivers convenience, space and privacy for the growing family.

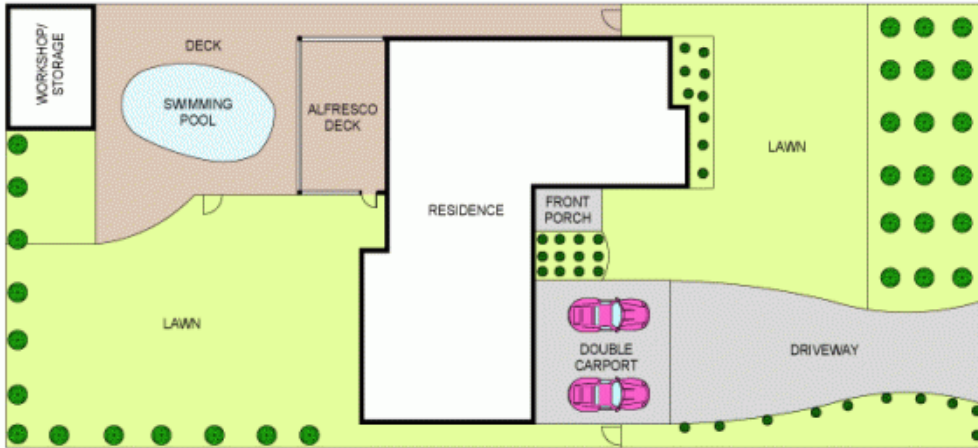
Peacefully set, the home is situated within the Murray Farm Public School & Cheltenham Girls High catchment and enjoys easy walking access to the M2 motorway for express City transport, a selection of nearby shops and the upcoming Cherrybrook train station will only be minutes

**Land Size** : 935 sqm

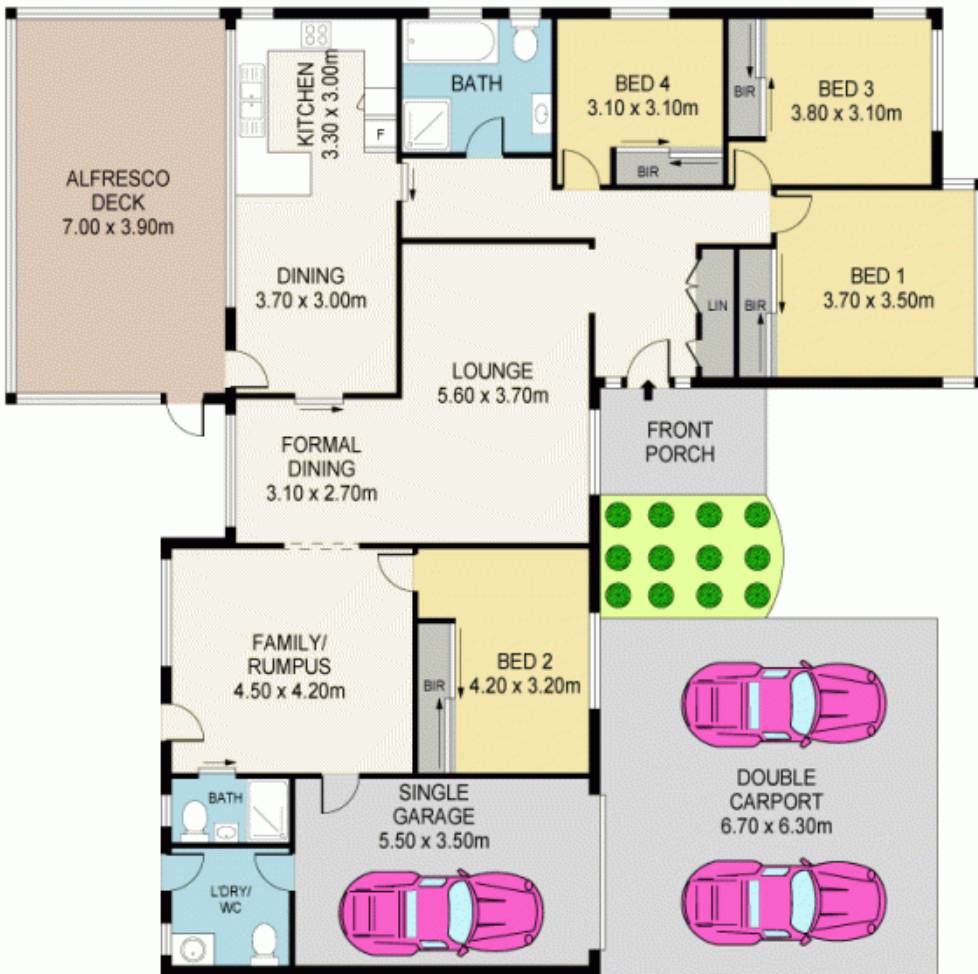
**View** : <https://www.mypropertyepping.com.au/sale/nsw/hills/west-pennant-hills/residential/house/5675080>



**Peter Horozakis**  
**(02) 9868 4888**



SITE PLAN  
(NOT TO SCALE)



GROUND FLOOR

## 23 WILDARA AVENUE, WEST PENNANT HILLS

Disclaimer: Please note that while the information contained in this floor plan is provided by reliable sources, we cannot guarantee its accuracy. It is intended as a guide only. Interested parties should rely on their own enquiry. Drawing not to scale. Dimensions are approximate.

