



16/27 Bennelong Parkway Wentworth Point NSW

2 1 1

Spectacular Resort Style Oasis - Affordable Strata Levies.

Positioned in the most popular "Mariners Cove" complex situated on Sydney's inner-harbour peninsula, this luxurious and most affordable apartment offers you something special with uninterrupted Sydney Olympic Park views.

Residents in the complex also enjoy the first-class facilities which include your own private man-made (lagoon) style beach, picturesque lap pool, fully equipped gymnasium, steam room and access to your own library.

This 2 bedroom security apartment enjoys a light filled floor plan on the 6th floor, a large covered timber deck with a view that is the most perfect setting for entertaining in style as well as

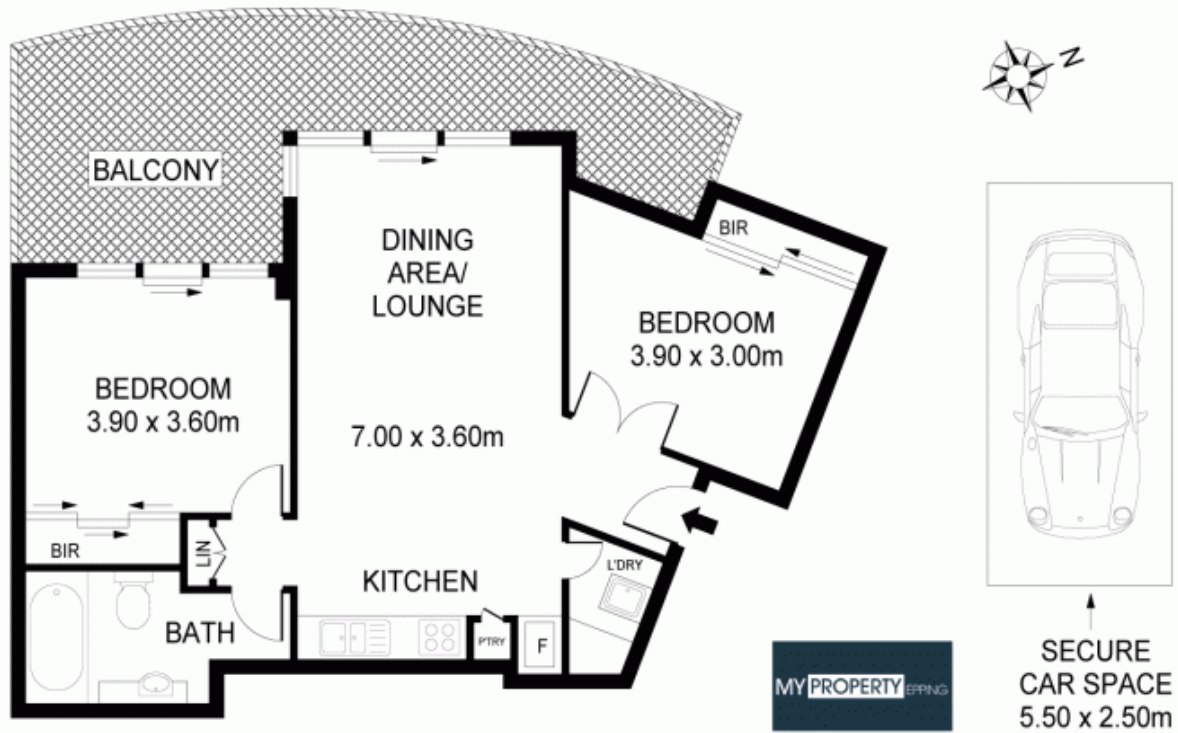
Price : \$ 654,000
Building Size : 10 sqm
View : <https://www.mypropertyepping.com.au/sale/nsw/inner-west/wentworth-point/residential/apartment/5675157>



Peter Horozakis
(02) 9868 4888



Joanne Horozakis
(02) 9868 4888



16/27 BENNELONG PARK WAY, WENTWORTH POINT

Measurements are approximate. Not to Scale. For illustrative purposes only.