



## 5/35 Lansdowne Street Merrylands NSW

3 2 2

Near new townhome with double parking, storage and low strata levies.

Superbly positioned within a quiet residential street, this magnificent and contemporary family home is one of the finest townhouses currently being offered on the sale market.

Impressive finishes throughout, this spacious two storey floor plan provides an abundance of spacious living, light filled interiors and most of all peaceful surrounds.

With location being one of its biggest assets, its only a short walk to Merrylands and Guildford's local shops and train stations as well as close proximity to public schools, popular supermarket, parks and much more.

**Price** : \$ 700,000  
**Building Size** : 234 sqm  
**View** : <https://www.mypropertyepping.com.au/sale/nsw/parramatta/merrylands/residential/townhouse/5675207>



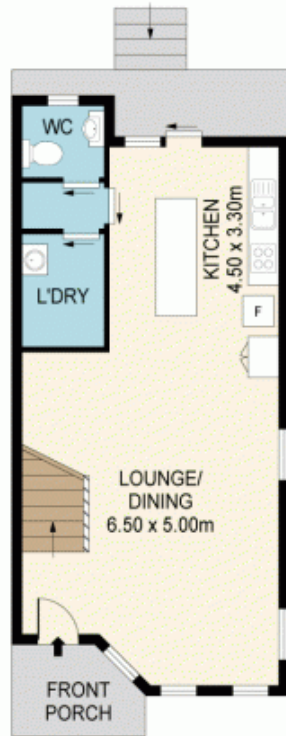
**Peter Horozakis**  
(02) 9868 4888



**Jimm Nestoras**  
(02) 9868 4888



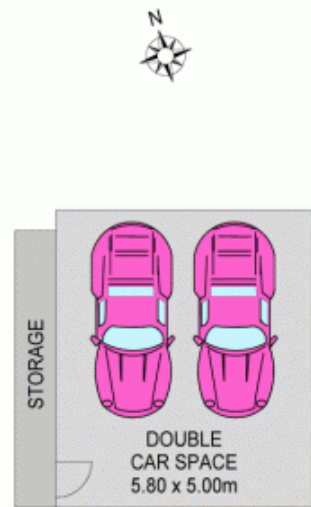
**SITE PLAN  
(NOT TO SCALE)**



**GROUND LEVEL**



**LEVEL ONE**



## 5/35 LANSDOWNE ST, MERRYLANDS

Disclaimer: Please note that while the information contained in this floor plan is provided by reliable sources, we cannot guarantee its accuracy. It is intended as a guide only. Interested parties should rely on their own enquiry. Drawing not to scale. Dimensions are approximate.