



4/482-492 Pacific Highway Lane Cove North NSW

2 1 1

Peaceful Tranquil Setting - Short Walk To Artarmon Station.

'Enter from 40 Helen street, Lane Cove. Serenely situated to the rear of Panorama Court.'

Hunting for your real estate property shouldn't be so hard, hence here is a property you will be interested in as it has loads of potential and it is priced to sell.

Conveniently located 1st floor apartment is only 50 metres to City Bus stop or approximately a 700 metre stroll to Artarmon Railway Station, only minutes drive to the hub of Chatswood, popular schools, eateries, Helen Street Reserve & much more. Everything you need just around the corner!

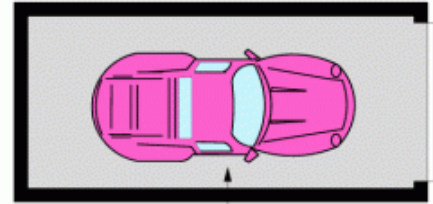
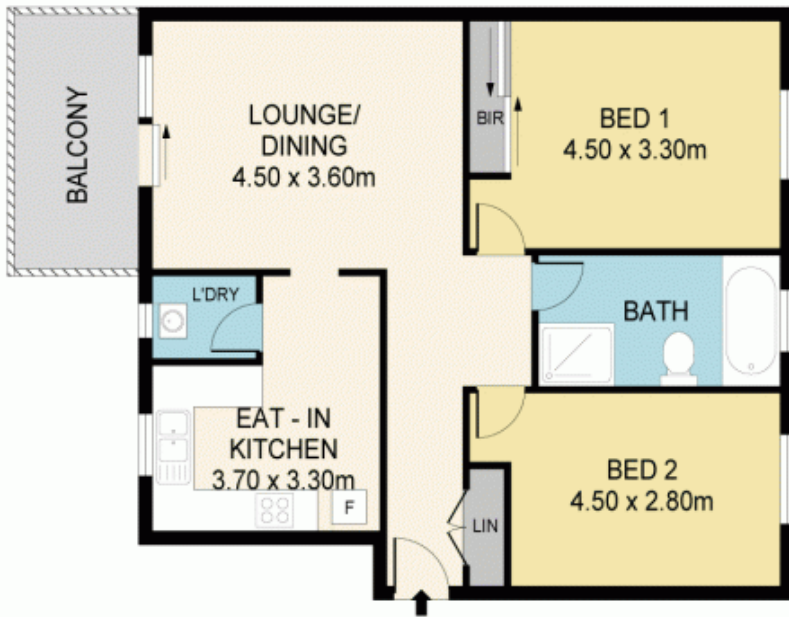
Price : \$ 710,000
Building Size : 89.2 sqm
View : <https://www.mypropertyepping.com.au/sale/nsw/north-shore-lower/lane-cove-north/residential/apartment/5675256>



Peter Horozakis
(02) 9868 4888



Jimm Nestoras
(02) 9868 4888



SINGLE
GARAGE
5.60 x 2.50m



4/482-492 PACIFIC HWY, LANE COVE NORTH

Disclaimer; Please note that while the information contained in this floor plan is provided by reliable sources, we cannot guarantee its accuracy. It is intended as a guide only. Interested parties should rely on their own enquiry. Drawing not to scale. Dimensions are approximate.

