



## 901/81 Grafton Street Bondi Junction NSW

3 2 2

Simply Stunning & Once in a Lifetime...Uninterrupted City, Harbour & Water View.

Seeking a quality long term tenant...be quick to apply.

Boasting uninterrupted panoramic views that overlook the Harbour Bridge, Sydney CBD and surrounding waters, be enthralled with this most amazing resort style apartment which is located within Mirvac's award winning "SeaPoint" Residential Tower.

On behalf of our valued client, MyProperty Epping is thrilled to offer you this once in a lifetime opportunity to acquire this sublime 3 bedroom security apartment that is rarely offered on the rental market and we strongly encourage you to inspect & be amazed.

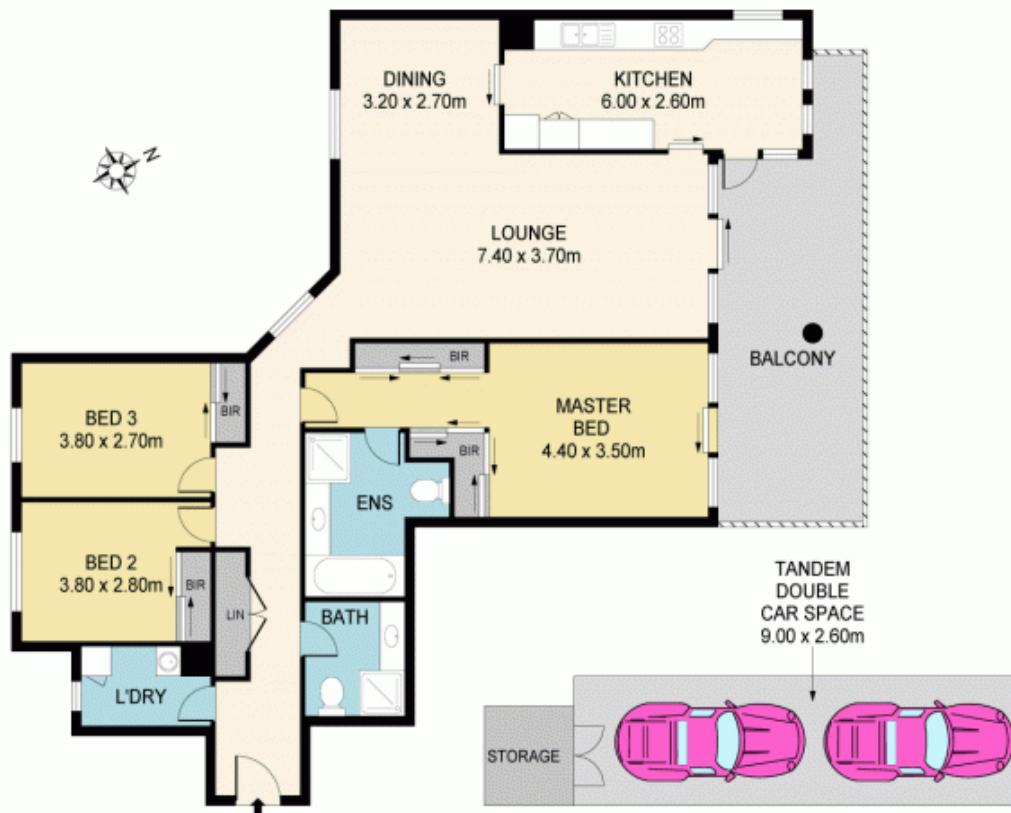
**Building Size** : 181 sqm  
**View** : <https://www.mypropertyepping.com.au/lease/nsw/eastern-suburbs/bondi-junction/residential/apartment/5675261>



**Jimm Nestoras**  
(02) 9868 4888



**Peter Horozakis**  
(02) 9868 4888



## 901/81 GRAFTON ST, BONDI JUNCTION

Disclaimer: Please note that while the information contained in this floor plan is provided by reliable sources, we cannot guarantee its accuracy. It is intended as a guide only. Interested parties should rely on their own enquiry. Drawing not to scale. Dimensions are approximate.