

12/51-53 Cross Street Guildford NSW

2 🛏 2 🚿 1 🚗

Absolutely One of The Finest Apartments you will find - North Facing 1st Floor & 104sqm.

Meticulously maintained by the current owner, be inspired by this stunning designer apartment that is perfectly located on the 1st floor of this small boutique complex. Impeccably appointed throughout, it presents as an opportunity like no other and we encourage all interested parties to inspect and appreciate all its qualities.

It's architectural design boasts expansive modern spaces flooded with fresh interiors, natural light and most of all total convenience.

Positioned in one of Guildford's most popular locations, it is walking distance to Guildford shops, train station, popular schools, parkland and only a short drive to Woodville Road,

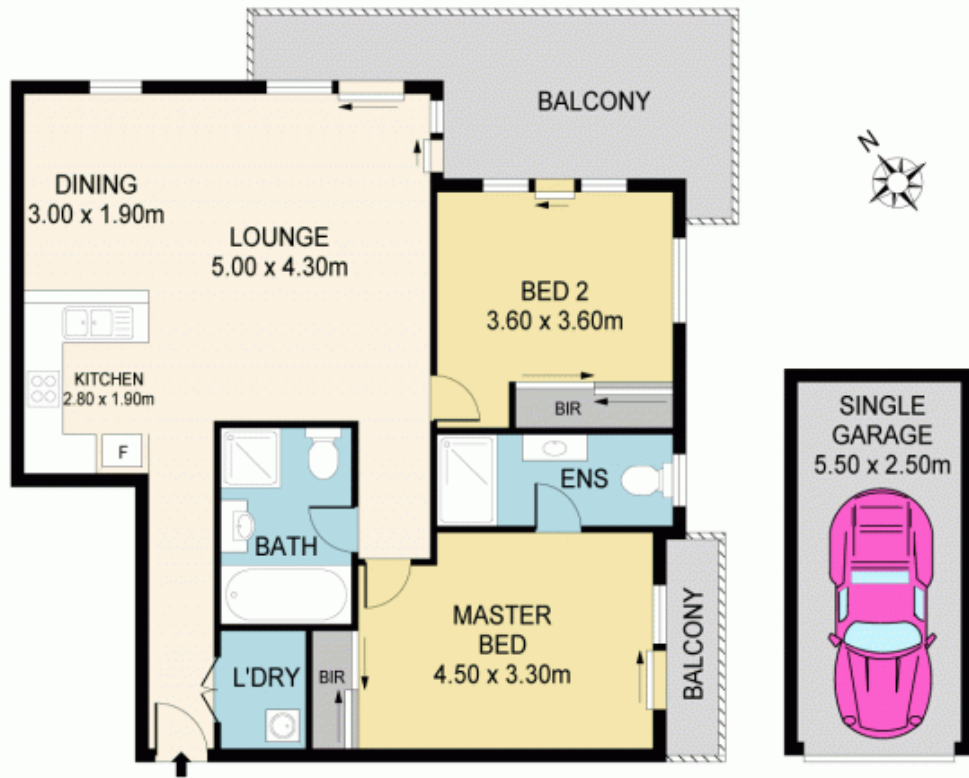
Price : \$ 523,000
Building Size : 104 sqm
View : <https://www.mypropertyepping.com.au/sale/nsw/parramatta/guildford/residential/apartment/5675297>



Peter Horozakis
(02) 9868 4888



Jimm Nestoras
(02) 9868 4888



12/51-53 CROSS ST, GUILDFORD

Disclaimer: Please note that while the information contained in this floor plan is provided by reliable sources, we cannot guarantee its accuracy. It is intended as a guide only. Interested parties should rely on their own enquiry. Drawing not to scale. Dimensions are approximate.

MYPROPERTY australia