



117/3 Pine Avenue Little Bay NSW

2 2 1

Short Walk to Magical Beach - Brilliant Villa Style Apartment.

Spectacular opportunity to secure prime real estate right in the heart of Little Bay. Offering you something very special and is a must to inspect in order to appreciate all its beauties, this ultra-modern home is more than just your usual apartment, it provides you with that homely villa style feel that is rarely seen in the area, allowing you to have your own veggie garden, rear courtyard & picturesque balcony that is truly amazing.

Perfectly positioned within the 'multi' award winning Prince Henry residential community along Sydney's Eastern Suburbs coastline, "Manta" is a boutique development that offers you a luxury lifestyle at an affordable price. Most importantly, it is just a short stroll to magical Little Bay Beach, choice of 4 golf courses, footsteps to cafes, supermarket, fitness & medical centres, children's playground, community centre & only 20 minutes to the City centre with regular transport on your doorstep.

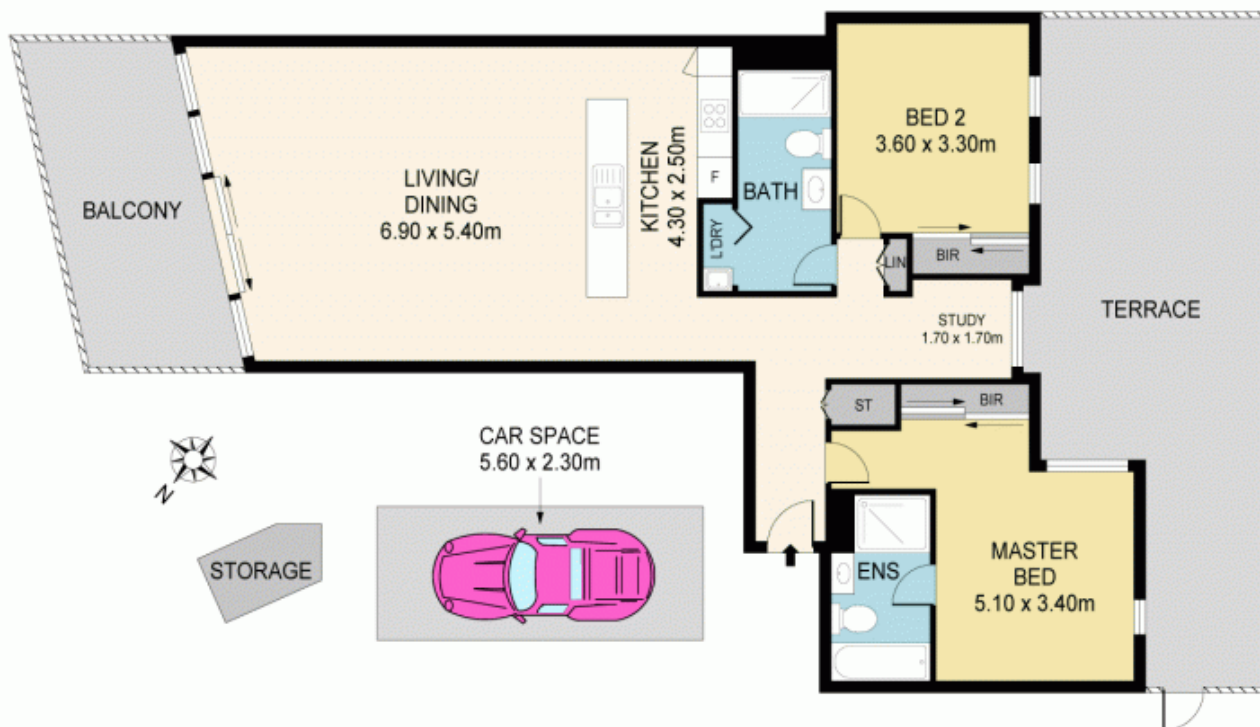
Arguably one of the most immaculate, best positioned &

Price : \$ 1,135,000
Building Size : 166 sqm
View : <https://www.mypropertyepping.com.au/sale/nsw/eastern-suburbs/little-bay/residential/apartment/5675344>



Peter Horozakis
 (02) 9868 4888

<https://www.mypropertyepping.com.au>



117/3 PINE AVE, LITTLE BAY

Disclaimer: Please note that while the information contained in this floor plan is provided by reliable sources, we cannot guarantee its accuracy. It is intended as a guide only. Interested parties should rely on their own enquiry. Drawing not to scale. Dimensions are approximate.

MYPROPERTY SPRING