



13/28-32 Pennant Hills Road North Parramatta NSW

2 2 1

Boutique Apartment with Own Entry, Huge Deck & Balcony...161sqm.

Presenting an opportunity like no other, this architect design executive apartment boasts expansive modern spaces flooded with fresh air, natural light, lifestyle and most of all convenience. It offers you a villa-style feel as it has it's own entrance, front courtyard, balcony and an enormous rear entertainers deck that will impress all.

Positioned in one of North Parramattas most exquisite young developments, it is located opposite the popular Belmore Park and it is cleverly designed for easycare living and entertaining in mind. Apartments of this calibre are almost impossible to find and incredibly rare in the area.

This particular security apartment is only moments away

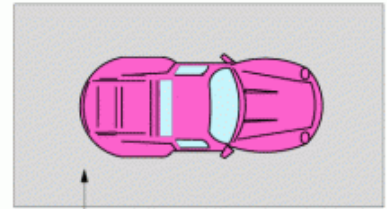
Price : \$ 542,500
Building Size : 161 sqm
View : <https://www.mypropertyepping.com.au/sale/nsw/parramatta/north-parramatta/residential/apartment/5675347>



Peter Horozakis
(02) 9868 4888



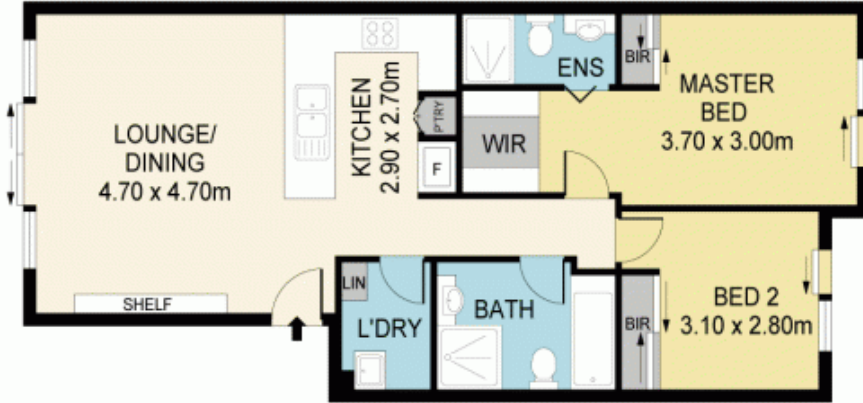
SITE PLAN
(NOT TO SCALE)



SECURE
CAR SPACE
5.80 x 3.20m



STORAGE
2.20 x 2.00m



GROUND FLOOR



13/28-32 PENNANT HILLS RD, NORTH PARRAMATTA

Disclaimer: Please note that while the information contained in this floor plan is provided by reliable sources, we cannot guarantee its accuracy. It is intended as a guide only. Interested parties should rely on their own enquiry. Drawing not to scale. Dimensions are approximate.

