



## 1/5 Maida Road Epping NSW

2 1 1

Luxurious Designer Apartment - Completely Renovated.

Landlord seeking a quality long term tenant...Be quick to inspect!

Placed within the exclusive and boutique "Colwyn" apartments, this stunning home unit enjoys an engaging blend of inspired design elements and sumptuous easy-care comfort.

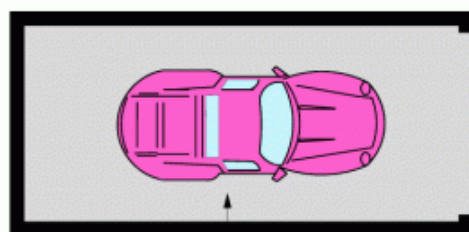
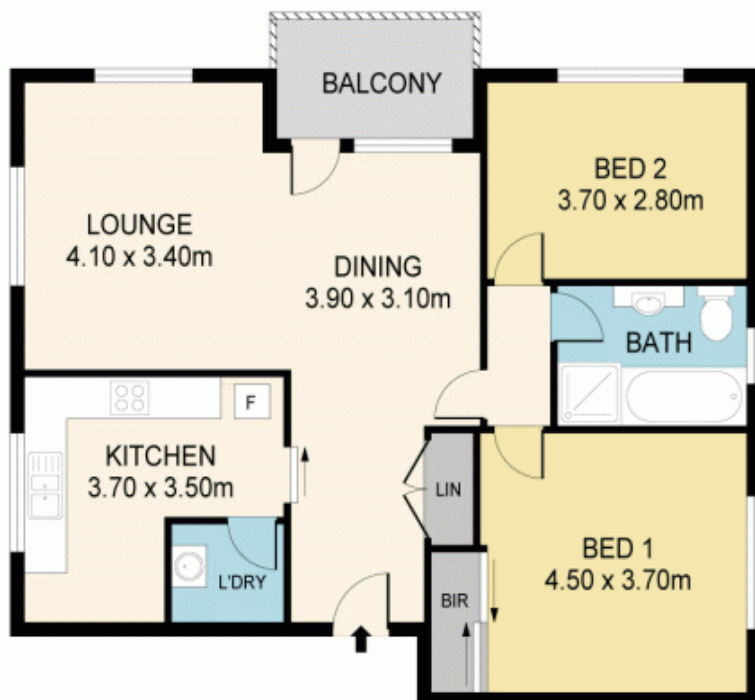
It reveals a flawless free-flowing layout purposely designed to optimise space, light and fabulous in-outdoor flexibility. Meticulously renovated and brimming with premium finishes throughout, this exceptional property is as much about lifestyle as it is about indulgence and will appeal to those tenants seeking the ultimate in designer suburban living.

Set in a small block of only 8 home units, this charmer is located just a short 5 minute stroll to the heart of Epping. Quality schools such as Epping Primary, Epping Boys and Cheltenham Girls High Schools are one major reason this suburb is highly sought after.

**View :** <https://www.mypropertyepping.com.au/lease/nsw/northern-suburbs/epping/residential/unit/5675394>



**Peter Horozakis**  
(02) 9868 4888



SINGLE  
LOCK - UP  
GARAGE/  
STORAGE  
6.20 x 2.80m



## 1/5 MAIDA RD, EPPING

Disclaimer: Please note that while the information contained in this floor plan is provided by reliable sources, we cannot guarantee its accuracy. It is intended as a guide only. Interested parties should rely on their own enquiry. Drawing not to scale. Dimensions are approximate.

MYPROPERTY EPPING