






65/23 George Street North Strathfield NSW

2  2  1 

Superbly Renovated Family Sized Apartment - North Facing & Newly Air-conditioned.

Absolutely one of the finest apartments you will find at this entry level price range, it offers you a desirable North Facing aspect, solid full brick construction, newly air-conditioned throughout & a huge total area of 123 sqm.

Meticulously maintained by the current owner, be inspired by this stunning designer apartment that is perfectly located within this exceptional resort style complex that features an early childhood centre (Montessori), stunning landscaped gardens & a central swimming pool that you can enjoy.

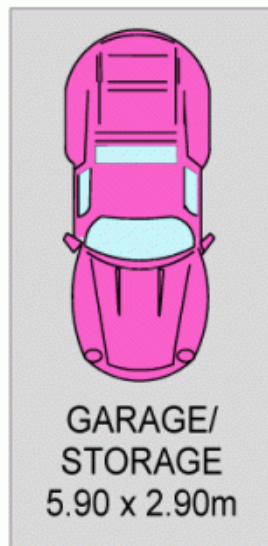
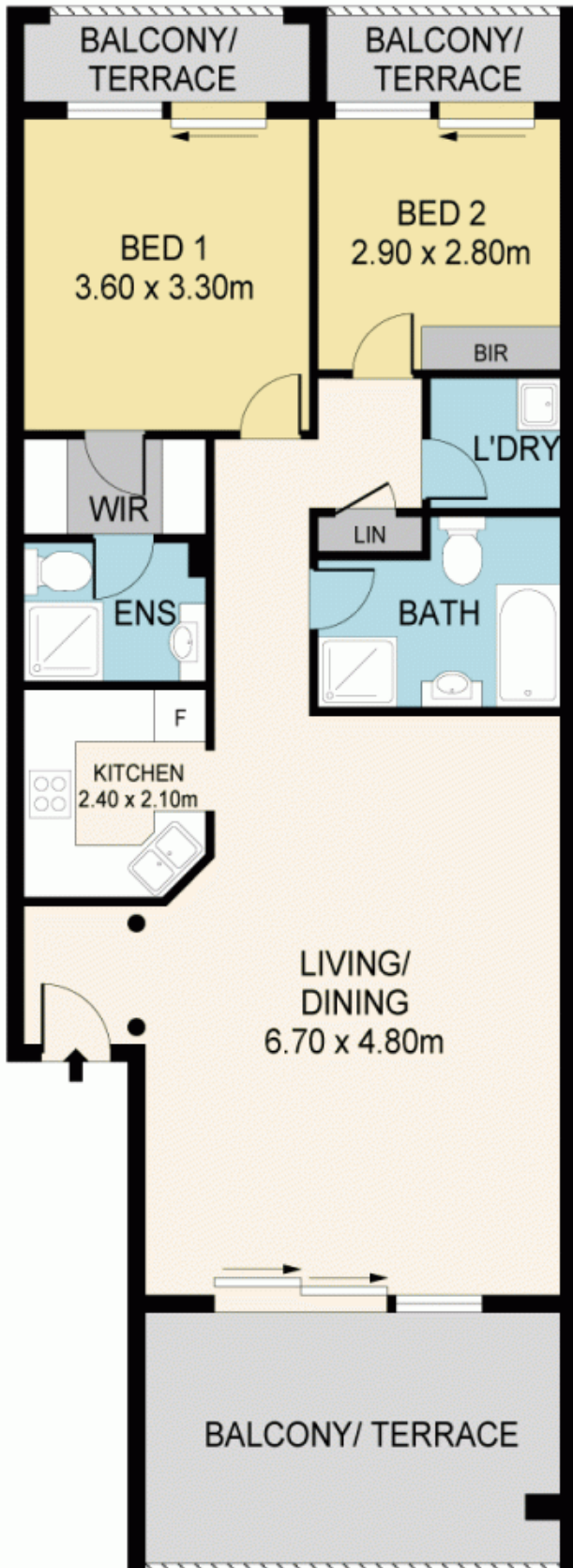
Presenting as an opportunity like no other, we encourage all interested parties to inspect and appreciate its expansive modern layout, fresh interiors & natural lighting.

You'll also love this handy central location that's just moments to North Strathfield Station, Bakehouse Quarter, Popular Schools, Sydney Olympic Park, Concord Golf Club much more. Everything you need just around the corner!

Building Size : 123 sqm
View : <https://www.mypropertyepping.com.au/sale/nsw/inner-west/north-strathfield/residential/apartment/5675424>



Peter Horozakis
(02) 9868 4888



65/23 GEORGE ST, NORTH STRATHFIELD

Disclaimer; Please note that while the information contained in this floor plan is provided by reliable sources, we cannot guarantee its accuracy. It is intended as a guide only. Interested parties should rely on their own enquiry. Drawing not to scale. Dimensions are approximate.

MY PROPERTY EPPING