

705/3-5 Weston Street Rosehill NSW

3 2 1

Modern Apartment with Amazing City & Harbour Views.

Prepare to be impressed with this ultimate urban style apartment which is perfectly positioned, highlighting uninterrupted City, Harbour Bridge & Sydney Olympic Park views that are rarely seen from an exceptionally large balcony.

Arguably one of the best luxurious apartments in this modern security complex, its desirable position (7th floor) showcases striking finishes and a versatile open plan layout that offers you plenty of flexibility and a lifestyle full of convenience and comfort.

Presenting an opportunity that is rarely seen on the rental market, it's situated only 3 minute walk to Rosehill railway station, 5 minute walk to Rosehill Public School, popular

Building Size : 126 sqm

View : <https://www.mypropertyepping.com.au/lease/nsw/parramatta/rosehill/residential/apartment/5924352>

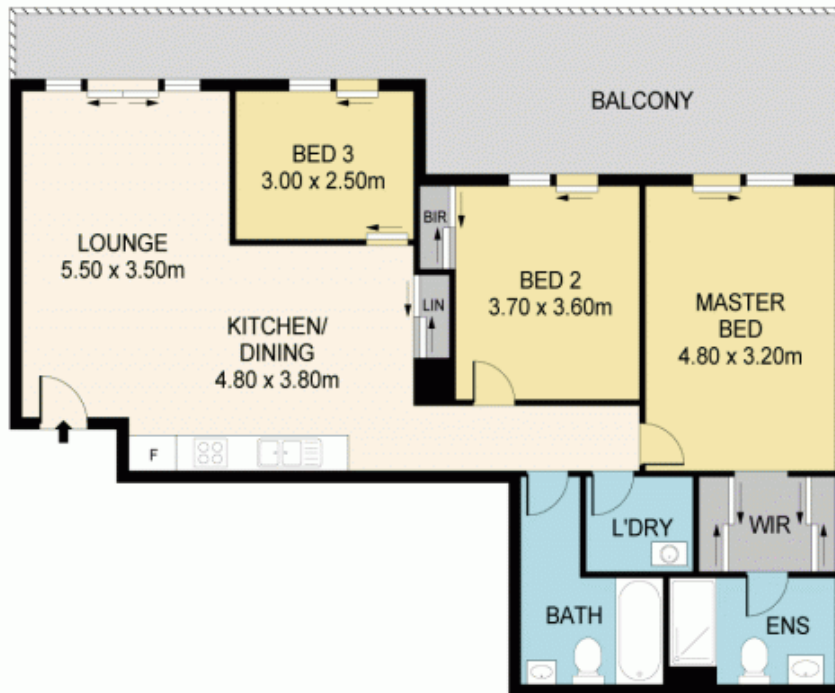


George Horozakis
(02) 9868 4888



Peter Horozakis
(02) 9868 4888

CITY VIEW
BRIDGE & OLYMPIC VIEWS



705/3-5 WESTON ST, ROSEHILL

Disclaimer: Please note that while the information contained in this floor plan is provided by reliable sources, we cannot guarantee its accuracy. It is intended as a guide only. Interested parties should rely on their own enquiry. Drawing not to scale. Dimensions are approximate.

MYPROPERTY