



25/114-118 Crimea Road Marsfield NSW

2 1 1

Superbly Renovated, Fully Air-Conditioned with Lock-up Garage.

Register your interest now...Landlord is seeking a quality long term tenant. Available to move in from 11/10/22.

Superbly positioned within a quiet residential setting, this magnificent full brick & spacious 2 bedroom townhouse is perfectly positioned in a private location towards the rear of the complex.

Impressive finishes throughout, this spacious two storey floor plan provides an abundance of spacious living, light filled interiors, three reverse cycle air-conditioners as well as peaceful surrounds.

With location being one of its biggest assets, it is only a

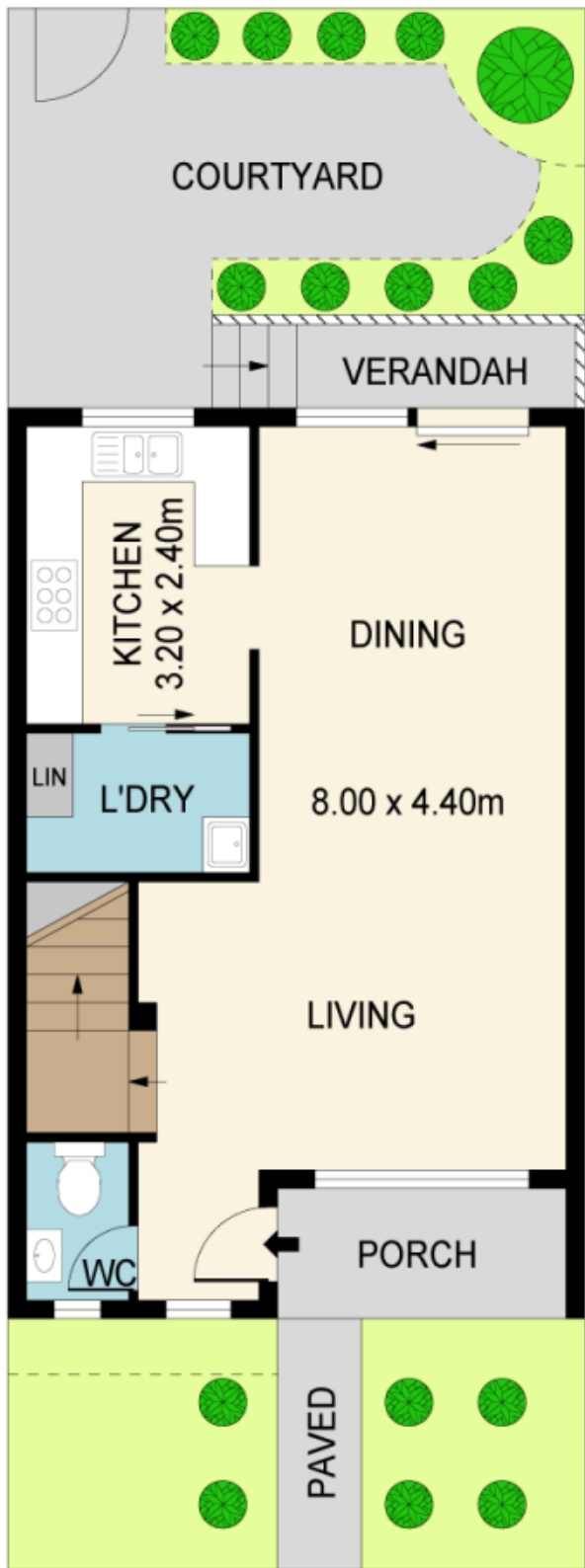
Building Size : 142 sqm
View : <https://www.mypropertyepping.com.au/lease/nsw/northern-suburbs/marsfield/residential/townhouse/7174425>



George Horozakis
(02) 9868 4888



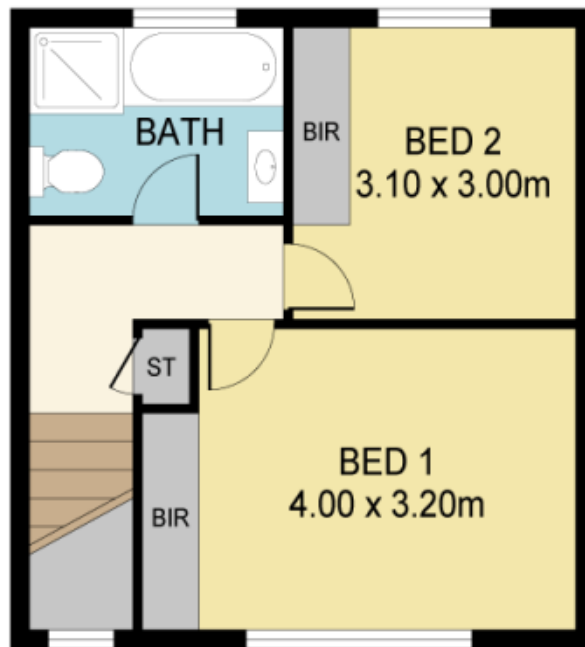
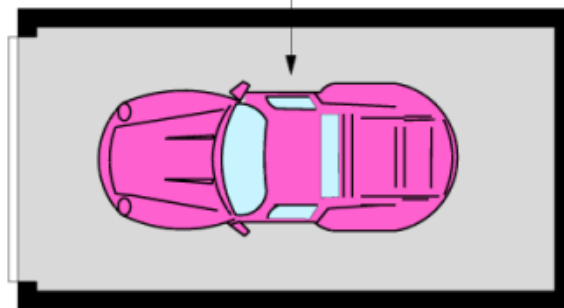
Peter Horozakis
(02) 9868 4888



GROUND LEVEL



**SINGLE
LOCK - UP
GARAGE
5.50 x 2.80m**



FIRST LEVEL

25/114-118 CRIMEA RD, MARSFIELD



Disclaimer; Please note that while the information contained in this floor plan is provided by reliable sources, we cannot guarantee its accuracy. It is intended as a guide only. Interested parties should rely on their own enquiry. Drawing not to scale. Dimensions are approximate.