



307/20-24 Epping Road Epping NSW

2 1 1

Quality Near New Apartment in Super Convenient Locale (101m2).

Picture perfect two bedroom security apartment in a brilliant modern development on the eastern side of Epping, it has been architecturally designed to embrace a dynamic open plan concept with a private backdrop. It's exclusively set in the heart of Epping for absolute convenience!

It poses as an ideal opportunity for the first home buyer or astute investor to get a foot into the ever popular Sydney market. The property is affordable and we encourage all interested parties to register their interest!

With location one of its biggest assets, it is only walking distance to Epping station, Coles supermarket, popular cafes, new restaurants eateries, public schools and much

Price : \$ 730,000

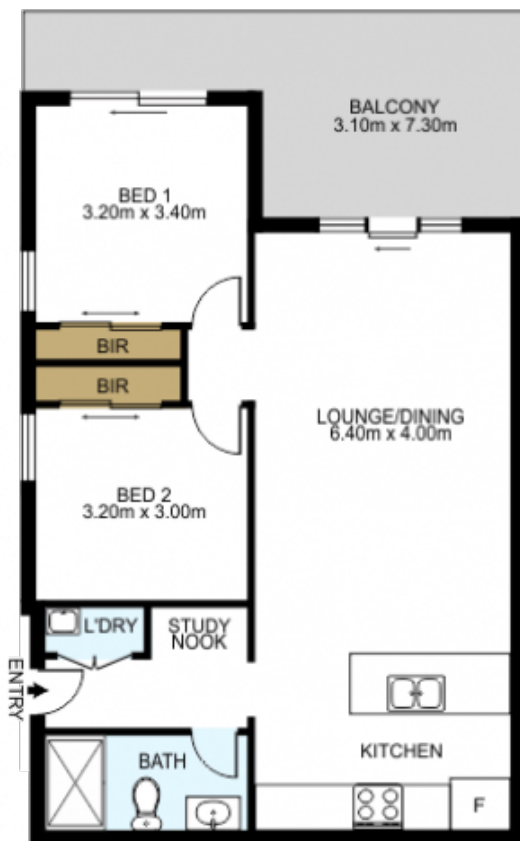
View : <https://www.mypropertyepping.com.au/sale/nsw/northern-suburbs/epping/residential/apartment/7481451>



Peter Horozakis
(02) 9868 4888



George Horozakis
(02) 9868 4888



DISCLAIMER: THIS IS FOR ILLUSTRATIVE PURPOSES ONLY. ALL DIMENSIONS ARE APPROXIMATE AND IT DOES NOT CONSTITUTE PART OF ANY LEGAL DOCUMENTS.

ADDRESS:

307/20-24 Epping Rd, Epping