



13 Vevers Avenue Marsden Park NSW

4 2 2

Sublime As New Property in Popular Marsden Park.

Prepare to be impressed with this most amazing near new double storey family home which is located in the sought after suburb of Marsden Park.

Perfectly positioned only moments away from restaurants and cafes, transport, local Shops such as the Marsden Park Home Hub, and nearby schools, you are sure to be impressed with its prime location as it has everything you need just around the corner!

Showcasing striking finishes, versatile open plan modern layout that offers you sun-drenched interiors, ducted air-conditioning, large yard for kids to play and immaculate interiors, it will definitely be in your interest to inspect and appreciate its qualities as this fabulous home is on the

Price : \$ 1,050,000
Land Size : 301.8 sqm
View : <https://www.mypropertyepping.com.au/sale/nsw/western-sydney/marsden-park/residential/house/7527522>



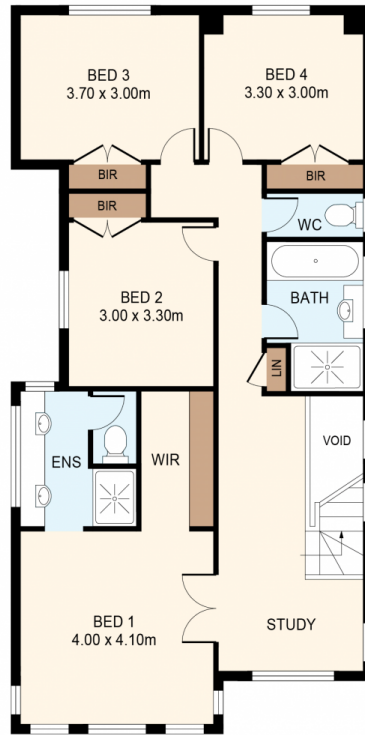
Peter Horozakis
(02) 9868 4888



George Horozakis
(02) 9868 4888



GROUND FLOOR



FIRST FLOOR



SITE PLAN
(NOT TO SCALE)

DISCLAIMER: THIS IS FOR ILLUSTRATIVE PURPOSES ONLY.
ALL DIMENSIONS ARE APPROXIMATE AND IT DOES NOT
CONSTITUTE PART OF ANY LEGAL DOCUMENTS.

ADDRESS:

13 VEVERS AVENUE, MARSDEN PARK