



69/134-150 Bulwara Road Pyrmont NSW

2 2 1

Refreshed & Ready for You...Total Area: 123m2.

You simply don't get opportunities like this? large, well-specified full-brick apartment with two-beds, two-baths plus huge balcony, and garage/storage on the City fringe just refreshed and offered at a snap-it-up price. Live-in, or invest to Lease.

Consider the assets of this outstanding opportunity for entry-level near-city living/investing?

#### HIGH POINTS

Spacious 106 sqm full brick unit with generous kitchen, lounge-dining, foyer/entrance, huge balcony, comfortable bedrooms, two large bathrooms (one ensuite, with full bathtub), separate interior laundry and storage

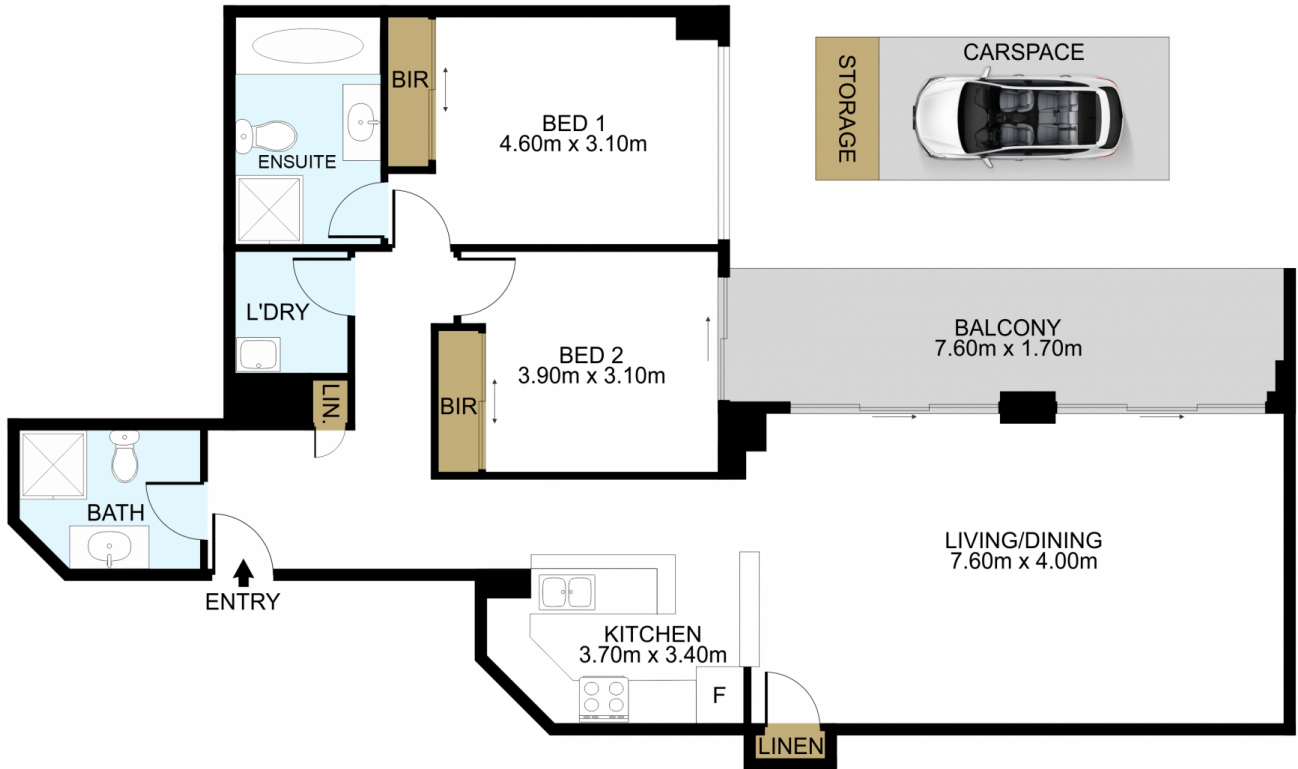
**Price** : \$ 1,022,000  
**Building Size** : 123 sqm  
**View** : <https://www.mypropertyepping.com.au/sale/nsw/sydney-city/pyrmont/residential/apartment/7698842>



**Rob Luck**  
(02) 9868 4888



**Peter Horozakis**  
(02) 9868 4888



DISCLAIMER: THIS IS FOR ILLUSTRATIVE PURPOSES ONLY. ALL DIMENSIONS ARE APPROXIMATE AND IT DOES NOT CONSTITUTE PART OF ANY LEGAL DOCUMENTS.

ADDRESS:

69/134-150 Bulwara Road, Pymont