

287/17-21 Romsey Street Waitara NSW

2 2 1

Bright & Spacious Apartment with Huge Courtyard (163m2).

With modern and exclusive appointments, generous proportions and a courtyard position that is extremely desirable with north facing sunshine, MyProperty Epping are proud to present this 2 bedroom apartment in the popular 'Mayfair' complex.

Offering a superb lifestyle of total convenience, it is only metres to Hornsby Girls High School, Westfield Hornsby, Waitara Station, parkland & much more. Everything you need just around the corner!

HIGH POINTS

Whopping apartment size = 146m2, Security Parking =

Price : \$ 785,000
Building Size : 163 sqm
View : <https://www.mypropertyepping.com.au/sale/nsw/north-shore-upper/waitara/residential/apartment/7720476>



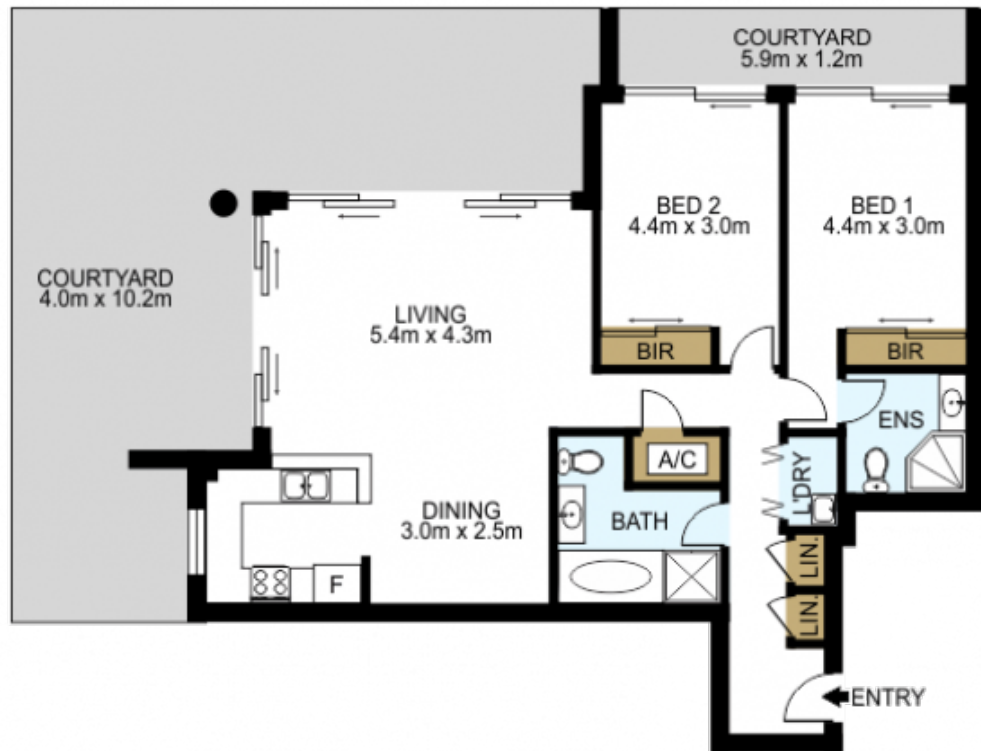
Peter Horozakis
(02) 9868 4888



George Horozakis
(02) 9868 4888



SECURE
CAR SPACE
7.0m x 2.4m



DISCLAIMER: THIS IS FOR ILLUSTRATIVE PURPOSES ONLY.
ALL DIMENSIONS ARE APPROXIMATE AND IT DOES NOT
CONSTITUTE PART OF ANY LEGAL DOCUMENTS.

ADDRESS:

287/17 Romsey St, Waitara