



G8/32-34 Ferntree Place Epping NSW

2 2 1

Sensational Villa-Style Apartment with Huge Private Courtyard (Total Area: 135m²).

Sensational opportunity to secure this attractive contemporary apartment showcasing a huge courtyard with its own private entry. MyProperty Epping is proud to present you something very special & we encourage all interested buyers to inspect and appreciate all its beauties.

This modern home is more than just your usual apartment, it provides you with that homely villa-style feel that is rarely seen, allowing total privacy entering through your own massive courtyard that showcases a gorgeous garden outlook. It's sure going to appeal to any couple/family that need the space for outdoor entertaining.

Overlooking manicured gardens, this highly sought-after

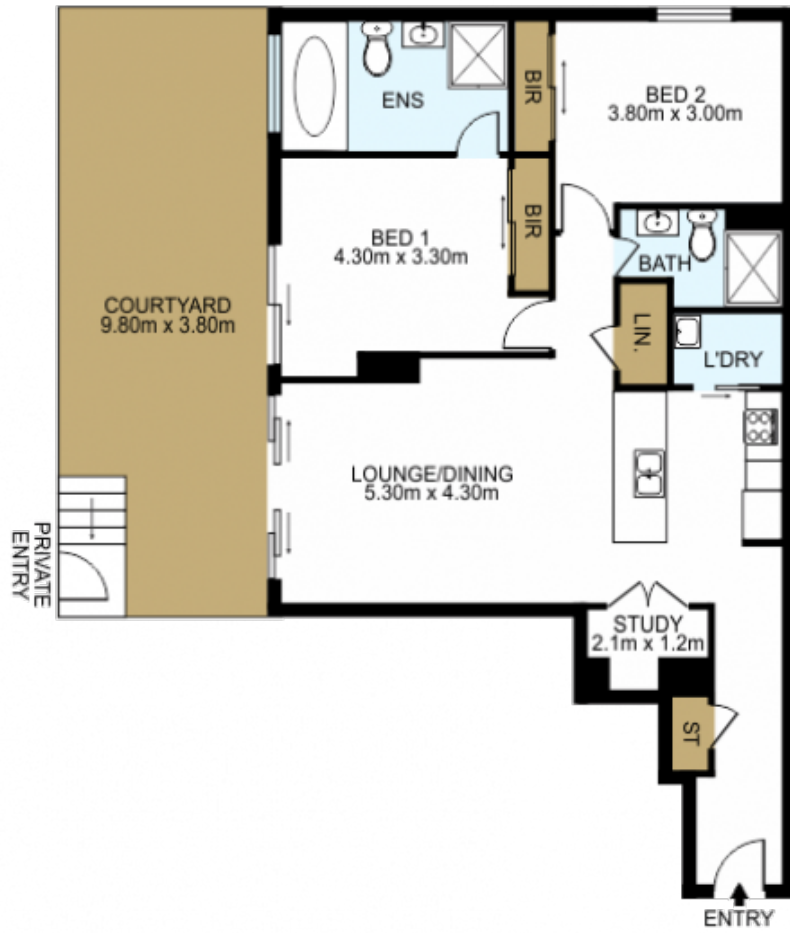
Price : \$ 717,000
Building Size : 135 sqm
View : <https://www.mypropertyepping.com.au/sale/nsw/northern-suburbs/epping/residential/apartment/7737738>



Peter Horozakis
(02) 9868 4888



George Horozakis
(02) 9868 4888



DISCLAIMER: THIS IS FOR ILLUSTRATIVE PURPOSES ONLY. ALL DIMENSIONS ARE APPROXIMATE AND IT DOES NOT CONSTITUTE PART OF ANY LEGAL DOCUMENTS.

ADDRESS:

8/32-34 Ferntree Place Epping