



## G30/3 Gerbera Place Kellyville NSW

3 2 2

Enormous Courtyard Apartment with Study, Double Parking & Storage (194m2).

Impeccably maintained and spaciouly laid out, this modern 3 bedroom over-sized residence is a testament to sophisticated, luxurious apartment living on a grand scale. Filled with sunlight, its ultra-contemporary interiors are dominated by first class design and its wrap-around courtyard that is perfect for entertaining.

### HIGH POINTS

Apartment = 161m2

Double Security Car Space = 28m2

Separate Storage = 5m2

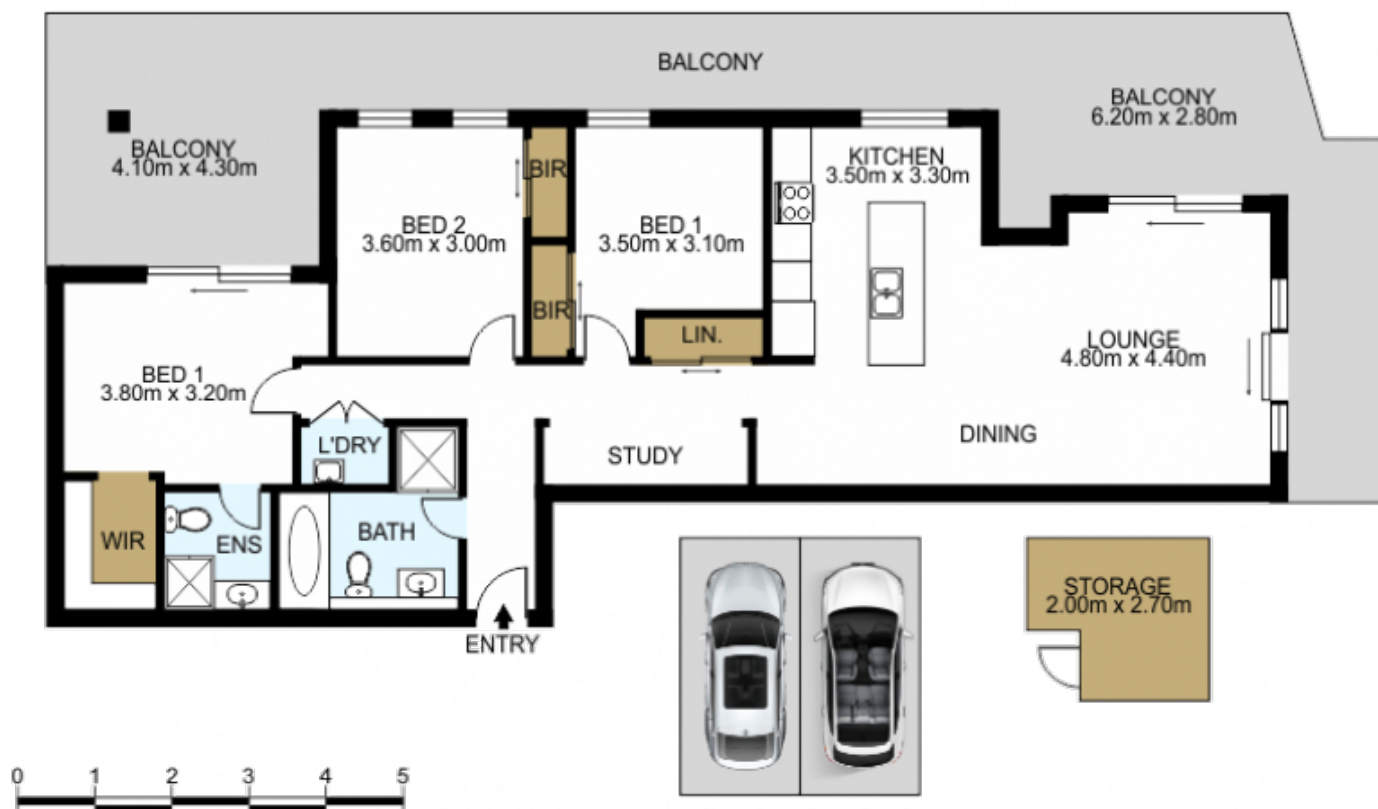
**Price** : \$ 975,000  
**Building Size** : 194 sqm  
**View** : <https://www.mypropertyepping.com.au/sale/nsw/hills/kellyville/residential/apartment/7912319>



**George Horozakis**  
 (02) 9868 4888



**Peter Horozakis**  
 (02) 9868 4888



DISCLAIMER: THIS IS FOR ILLUSTRATIVE PURPOSES ONLY.  
ALL DIMENSIONS ARE APPROXIMATE AND IT DOES NOT  
CONSTITUTE PART OF ANY LEGAL DOCUMENTS.

ADDRESS:

G30/3 Gerbera Place, Kellyville