



310/6 Lachlan Street Waterloo NSW

2 2 1

Dual-Level Apartment in the Popular "Cameo" Community - Pool & Gym Included.

Convenience, community and sophisticated city-edge living combine for an amazing lifestyle with this quality dual level apartment that is more like a townhouse.

Situated within the quality 'Cameo' development, it brings light, space and style to its list of many highlights and provides a well-designed living space with access to first-class resort facilities that include onsite resort style aquatic centre and a state-of-the art gymnasium, truly amazing!

With location being one of its biggest assets, this lifestyle location is close to East Village and Surry Hills eateries plus it is just 4km from the CBD, with quick and easy

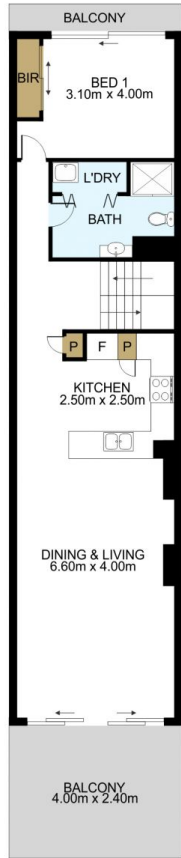
Building Size : 123 sqm
View : <https://www.mypropertyepping.com.au/lease/nsw/eastern-suburbs/waterloo/residential/apartment/7958604>



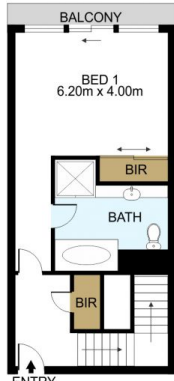
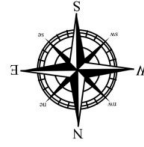
George Horozakis
(02) 9868 4888



Peter Horozakis
(02) 9868 4888



FIRST FLOOR



GROUND FLOOR



DISCLAIMER: THIS IS FOR ILLUSTRATIVE PURPOSES ONLY. ALL DIMENSIONS ARE APPROXIMATE AND IT DOES NOT CONSTITUTE PART OF ANY LEGAL DOCUMENTS.

ADDRESS:

310/6 Lachlan St, Waterloo.