



3/15 Belmont Avenue Wollstonecraft NSW

3 2 1

Newly renovated, simply stunning with peaceful views.

Meticulously renovated and now ready to occupy, this is an exceptional opportunity to secure a prized property in a highly sought after locale. The owner is now seeking a quality long term tenant to call this beauty HOME so we encourage all house proud tenants to inspect and register their interest immediately by submitting an application.

The first thing you notice when entering this large-sized townhouse is the uplifting sense of light and space that is even further enhanced by a beautiful leafy panorama that stretches over Newlands Reserve from a stunning terrace balcony.

Type : Townhouse

View : <https://www.mypropertyepping.com.au/lease/nsw/north-shore-lower/wollstonecraft/residential/townhouse/8311366>



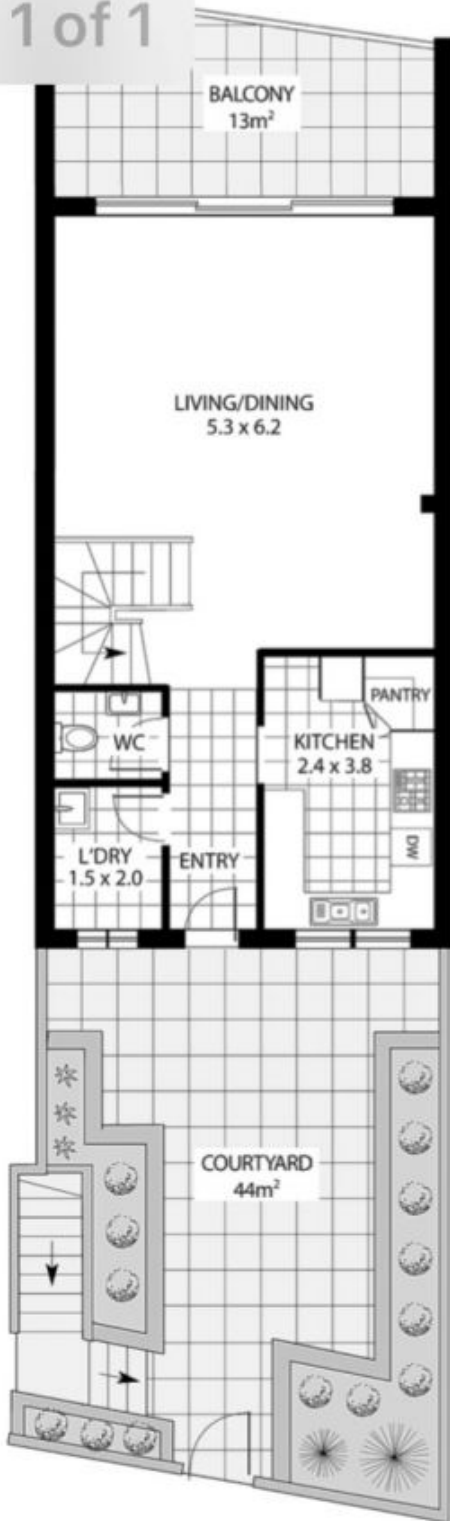
George Horozakis
(02) 9868 4888



Peter Horozakis
(02) 9868 4888

[For full version visit the website](https://www.mypropertyepping.com.au)

1 of 1

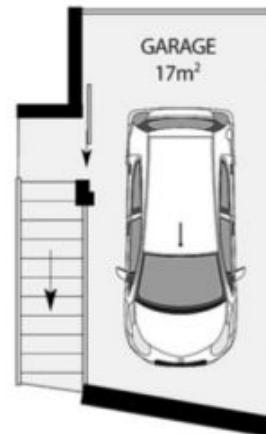


GROUND FLOOR PLAN

TOWNHOUSE FLOOR AREA = 119m² approx.
(INCLUDING BALCONY)
COURTYARD AREA = 44m² approx.
GARAGE AREA = 17m² approx.
TOTAL AREA ON TITLE = 180m² approx.



FIRST FLOOR PLAN



BASEMENT PLAN



Scale in metres. Indicative only. Dimensions are approximate. All information contained herein is gathered from sources we believe to be reliable. However we cannot guarantee its accuracy and interested persons should rely on their own enquiries.

